



DIAMOND REPORT

ELECTRONIC COPY

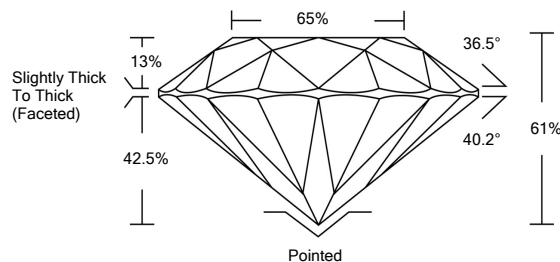
November 8, 2020	
IGI Report Number	450028472
Description	NATURAL DIAMOND
Shape and Cutting Style	ROUND BRILLIANT
Measurements	7.17 - 7.26 x 4.40 mm

GRADING RESULTS

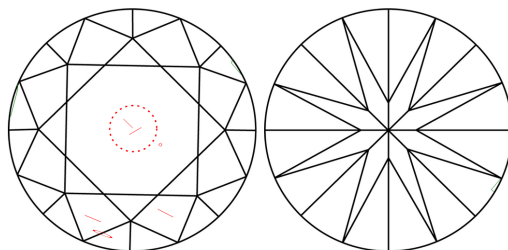
Carat Weight	1.50 CARAT
Color Grade	L
Clarity Grade	SI 2
Cut Grade	VERY GOOD

ADDITIONAL GRADING INFORMATION

Polish	EXCELLENT
Symmetry	EXCELLENT
Fluorescence	VERY SLIGHT
Inscription(s)	IGI 450028472



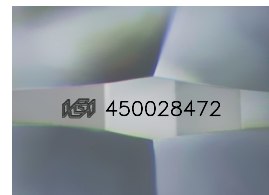
CLARITY CHARACTERISTICS



KEY TO SYMBOLS

Red symbols indicate internal characteristics.
Green symbols indicate external characteristics.

450028472



COLOR

D - F	G - J	K - M	N - R	S - Z	FANCY
Colorless	Near Colorless	Slightly Tinted	Very Light Color	Light Color	

CLARITY

IF	VVS ¹⁻²	VS ¹⁻²	SI ¹⁻²	I ¹⁻²
Internally Flawless	Very Very Slightly Included	Very Slightly Included	Slightly Included	Included



© IGI 2020, International Gemological Institute

FD - 10 20



THIS DOCUMENT WAS PRODUCED WITH THE FOLLOWING SECURITY MEASURES: SPECIAL DOCUMENT PAPER, INK SCREENS, WATERMARK, BACKGROUND DESIGNS, HOLOGRAM AND OTHER SECURITY FEATURES NOT LISTED AND DO EXCEED DOCUMENT SECURITY INDUSTRY GUIDELINES

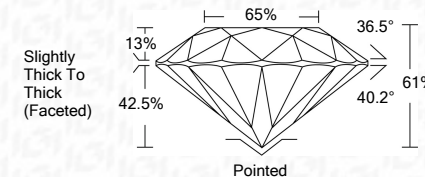
DIAMOND REPORT



November 8, 2020	
IGI Report Number	450028472
Description	NATURAL DIAMOND
Shape and Cutting Style	ROUND BRILLIANT
Measurements	7.17 - 7.26 x 4.40 mm

GRADING RESULTS

Carat Weight	1.50 CARAT
Color Grade	L
Clarity Grade	SI 2
Cut Grade	VERY GOOD



ADDITIONAL GRADING INFORMATION

Polish	EXCELLENT
Symmetry	EXCELLENT
Fluorescence	VERY SLIGHT
Inscription(s)	IGI 450028472



November 8, 2020	Quantity	Clarity Grade	Weight	Color Grade	Fluorescence
GI Report No 450028472	Carat Weight	Cut Grade	7.26 x 4.40 mm		
NATURAL DIAMOND	Depth				
NATURAL BRILLIANT	Table				
	Grade				
	Culet				
	Polish				
	Symmetry				
	Measure (e)				