



ELECTRONIC COPY

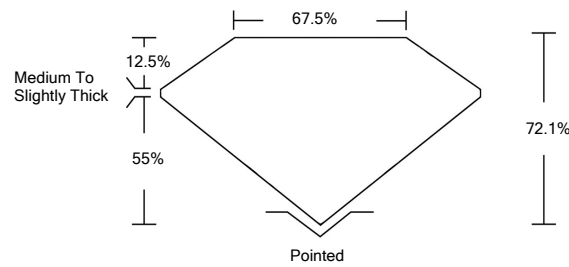
January 21, 2022	
IGI Report Number	470133965
Description	NATURAL DIAMOND
Shape and Cutting Style	PRINCESS CUT
Measurements	6.39 x 6.13 x 4.42 mm

Carat Weight	1.50 CARAT
Color Grade	H
Clarity Grade	VVS 1

Polish - Symmetry	GOOD
Proportions	VERY GOOD
Fluorescence	NONE
Inscription(s)	IGI 470133965

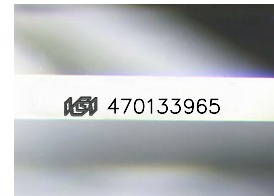


PROPORTIONS



The figure consists of two square diagrams. The left diagram shows a square with its four corners cut off by lines parallel to the sides, creating a smaller central square and four congruent right-angled triangles at the corners. The right diagram shows a square with lines drawn from each corner to the midpoint of the opposite side, creating a central eight-pointed star shape (octagram) and four congruent right-angled triangles at the corners.

Red symbols indicate internal characteristics.
Green symbols indicate external characteristics.



Sample Image Used

D - F G - J K - M N - R S - Z FANCY

Colorless	Near Colorless	Slightly Tinted	Very Light Color	Light Color
-----------	-------------------	--------------------	---------------------	----------------

IF VVS ¹⁻² VS ¹⁻² SI ¹⁻² I ¹⁻³

Internally Flawless	Very Very Slightly Included	Very Slightly Included	Slightly Included	Included
------------------------	--------------------------------	---------------------------	----------------------	----------

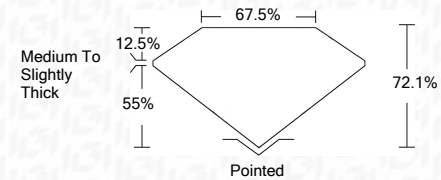


FD - 10 20



January 21, 2022	
IGI Report Number	470133965
Description	NATURAL DIAMOND
Shape and Cutting Style	PRINCESS CUT
Measurements	6.39 x 6.13 x 4.42 mm

Carat Weight	1.50 CARAT
Color Grade	H
Clarity Grade	VVS 1



Polish - Symmetry	GOOD
Proportions	VERY GOOD
Fluorescence	NONE
Inscription(s)	IGI 470133965



IGI

January 21, 2022	GI Report No 470133965	1.50 CARAT	H
NATURAL DIAMOND			
PRINCESS CUT			
39.39 x 6.13 x 4.42 mm	Carat Weight		
	Color Grade		
	Clarity Grade		
	Depth	VS1	
	Table	72.1%	
	Girdle	67.5%	
		Medium To Slightly Thick	
	Culet	Pruned	
	Pol. Sym	GOOD	
	Proportions	VERY GOOD	
	Fluorescence	NONE	
	Description(s)	IGI 470133965	

www.igi.org