

472176091

May 27, 2021

IGI Report Number472176091

DescriptionNATURAL DIAMOND

Shape and Cutting StylePEAR BRILLIANT

Measurements8.48 x 5.89 x 3.29 mm

GRADING RESULTS

Carat Weight1.02 CARAT

Color GradeF

Clarity GradeI 1

ADDITIONAL GRADING INFORMATION

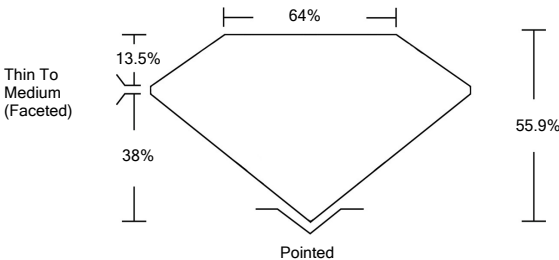
Polish - SymmetryVERY GOOD

ProportionsVERY GOOD

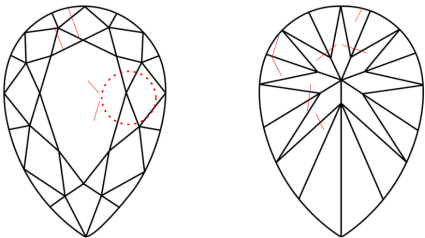
FluorescenceSTRONG

Inscription(s)IGI 472176091

PROPORTIONS

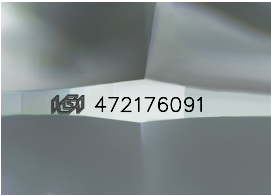


CLARITY CHARACTERISTICS



KEY TO SYMBOLS

Red symbols indicate internal characteristics.
Green symbols indicate external characteristics.



COLOR

D - F	G - J	K - M	N - R	S - Z	FANCY
Colorless	Near Colorless	Slightly Tinted	Very Light Color	Light Color	

CLARITY

IF	VS ¹⁻²	VS ¹⁻²	SI ¹⁻²	I ¹⁻³
Internally Flawless	Very Very Slightly Included	Very Slightly Included	Slightly Included	Included

DIAMOND REPORT



May 27, 2021

IGI Report Number472176091

DescriptionNATURAL DIAMOND

Shape and Cutting StylePEAR BRILLIANT

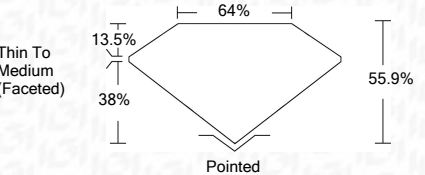
Measurements8.48 x 5.89 x 3.29 mm

GRADING RESULTS

Carat Weight1.02 CARAT

Color GradeF

Clarity GradeI 1



ADDITIONAL GRADING INFORMATION

Polish - SymmetryVERY GOOD

ProportionsVERY GOOD

FluorescenceSTRONG

Inscription(s)IGI 472176091



IGI

May 27, 2021	IGI Report No 472176091	NATURAL DIAMOND	PEAR BRILLIANT	8.48 x 5.89 x 3.29 mm	1.02 CARAT	F	I 1	55.9%	64%	Thin To Medium (Faceted)	Pointed	VERY GOOD	VERY GOOD	STRONG	IGI 472176091
				Carat Weight	Color Grade	Clarity Grade	Depth	Table	Girdle	Culet	Pol - Sym	Proportions	Fluorescence	Inscription(s)	

