



ELECTRONIC COPY

February 7, 2022	
IGI Report Number	502181341
Description	NATURAL DIAMOND
Shape and Cutting Style	ROUND MODIFIED BRILLIANT
Measurements	6.47 - 6.49 x 3.90 mm

GRADING RESULTS

Carat Weight	0.98 CARAT
Color Grade	G
Clarity Grade	VVS 1
Cut Grade	EXCELLENT

ADDITIONAL GRADING INFORMATION

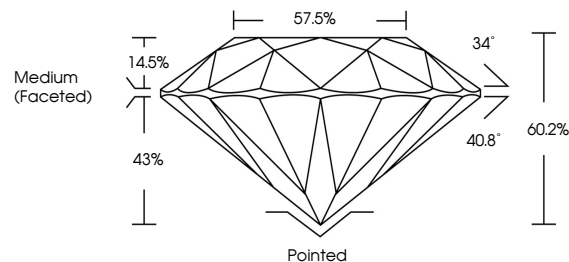
Polish	EXCELLENT
Symmetry	EXCELLENT
Fluorescence	NONE
Inscription(s)	IGI 502181341 LUCKY STAR

Comments: This diamond displays a pattern of sixteen arrows visible through the crown.

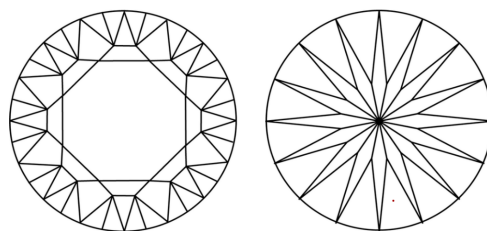


502181341

PROPORTIONS

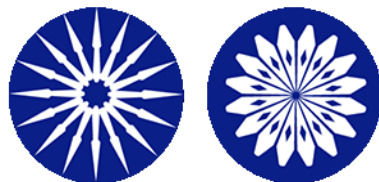


CLARITY CHARACTERISTICS

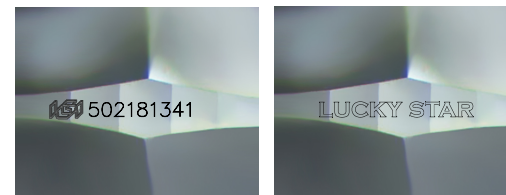


KEY TO SYMBOLS

Red symbols indicate internal characteristics.
Green symbols indicate external characteristics.



www.igi.org



Sample Images Used

COLOR

D - F	G - J	K - M	N - R	S - Z	FANCY
Colorless	Near Colorless	Slightly Tinted	Very Light Color	Light Color	

CLARITY

IF	VVS ¹⁻²	VS ¹⁻²	SI ¹⁻²	I ¹⁻³
Internally Flawless	Very Very Slightly Included	Very Slightly Included	Slightly Included	Included



© IGI 2020, International Gemological Institute

FD - 10 20



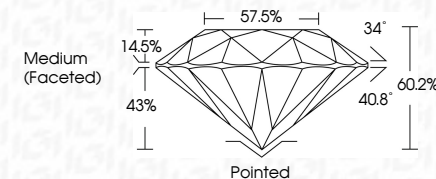
DIAMOND REPORT



February 7, 2022	
IGI Report Number	502181341
Description	NATURAL DIAMOND
Shape and Cutting Style	ROUND MODIFIED BRILLIANT
Measurements	6.47 - 6.49 x 3.90 mm

GRADING RESULTS

Carat Weight	0.98 CARAT
Color Grade	G
Clarity Grade	VVS 1
Cut Grade	EXCELLENT



ADDITIONAL GRADING INFORMATION

Polish	EXCELLENT
Symmetry	EXCELLENT
Fluorescence	NONE
Inscription(s)	IGI 502181341 LUCKY STAR

Comments: This diamond displays a pattern of sixteen arrows visible through the crown.



February 7, 2022	6.47 - 6.49 x 3.90 mm
IGI Report No. 502	Color Grade
NATURAL DIAMON	Carat Weight
ROUND MODIFIED	Clarity Grade
	Cut Grade
	Depth
	Table
	Grade
	Culet
	Polish
	Symmetry
	Fluorescence
	Inscription(s)
Comments:	This diamond displ
	sixteen arrows visi
	crown.