

March 17, 2022

IGI Report Number502181502

DescriptionNATURAL DIAMOND

Shape and Cutting StyleROUND MODIFIED BRILLIANT

Measurements6.18 - 6.20 x 3.78 mm

GRADING RESULTS

Carat Weight0.87 CARAT

Color GradeE

Clarity GradeSI 1

Cut GradeEXCELLENT

ADDITIONAL GRADING INFORMATION

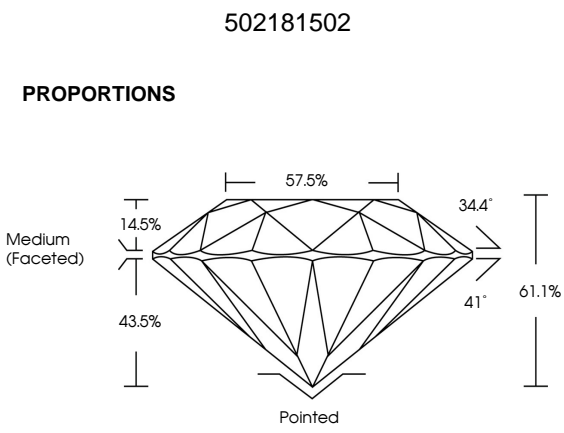
PolishEXCELLENT

SymmetryEXCELLENT

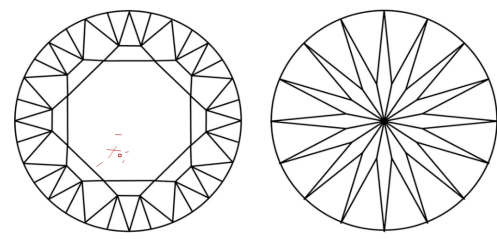
FluorescenceNONE

Inscription(s)IGI 502181502
LUCKY STAR

Comments: This diamond displays a pattern of sixteen arrows visible through the crown.

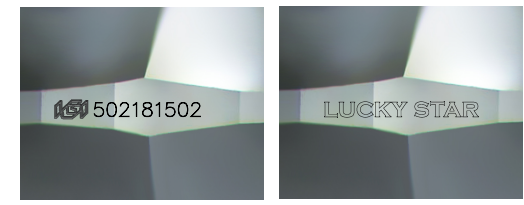
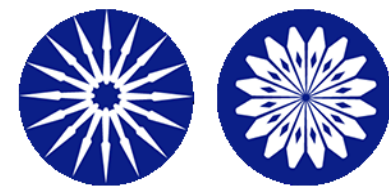


CLARITY CHARACTERISTICS



KEY TO SYMBOLS

Red symbols indicate internal characteristics.
Green symbols indicate external characteristics.



Sample Images Used


COLOR

D - F	G - J	K - M	N - R	S - Z	FANCY
Colorless	Near Colorless	Slightly Tinted	Very Light Color	Light Color	

CLARITY

IF	VS ¹⁻²	VS ¹⁻²	SI ¹⁻²	I ¹⁻³
Internally Flawless	Very Very Slightly Included	Very Slightly Included	Slightly Included	Included

DIAMOND REPORT



March 17, 2022

IGI Report Number502181502

DescriptionNATURAL DIAMOND

Shape and Cutting StyleROUND MODIFIED BRILLIANT

Measurements6.18 - 6.20 x 3.78 mm

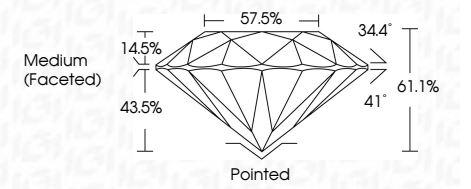
GRADING RESULTS

Carat Weight0.87 CARAT

Color GradeE

Clarity GradeSI 1

Cut GradeEXCELLENT



ADDITIONAL GRADING INFORMATION

PolishEXCELLENT

SymmetryEXCELLENT

FluorescenceNONE

Inscription(s)IGI 502181502
LUCKY STAR

Comments: This diamond displays a pattern of sixteen arrows visible through the crown.



March 17, 2022	IGI Report No 502181502	NATURAL DIAMOND	ROUND MODIFIED BRILLIANT	6.18 - 6.20 x 3.78 mm	0.87 CARAT	E	SI 1	EXCELLENT	57.5%	61.1%	Medium (Faceted)	Pointed	EXCELLENT	EXCELLENT	NONE	IGI 502181502 LUCKY STAR	Comments: This diamond displays a pattern of sixteen arrows visible through the crown.
					Carat Weight	Color Grade	Clarity Grade	Cut Grade	Depth	Table	Girdle	Culet	Polish	Symmetry	Fluorescence	Inscription(s)	