



INTERNATIONAL GEMOLOGICAL INSTITUTE

DIAMOND REPORT

ELECTRONIC COPY

March 7, 2022
IGI Report Number 510182949
Description NATURAL DIAMOND
Shape and Cutting Style ROUND BRILLIANT
Measurements 5.89 - 5.94 x 3.70 mm

GRADING RESULTS

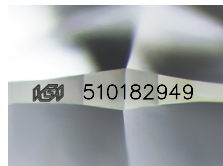
Carat Weight 0.81 CARAT
Color Grade I
Clarity Grade SI 2
Cut Grade EXCELLENT

ADDITIONAL GRADING INFORMATION

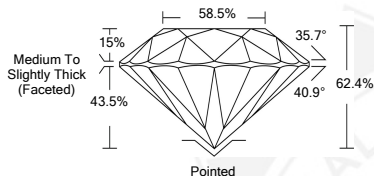
Polish EXCELLENT
Symmetry EXCELLENT
Fluorescence SLIGHT
Identification Features CLOUD, CRYSTAL, FEATHER
Inscription(s) IGI 510182949
Comments: IDEAL CUT ROUND BRILLIANT



510182949



Sample Image Used



COLOR

D - F	G - J	K - M	N - R	S - Z	FANCY
Colorless	Near Colorless	Slightly Tinted	Very Light Color	Light Color	

CLARITY

IF	VS ¹⁻²	VS ¹⁻²	SI ¹⁻²	I ¹⁻²
Internally Flawless	Very Very Slightly Included	Very Slightly Included	Slightly Included	Included



March 7, 2022
IGI Report Number 510182949
NATURAL DIAMOND
ROUND BRILLIANT
5.89 - 5.94 x 3.70 mm
Carat Weight 0.81 CARAT
Color Grade I
Clarity Grade SI 2
Cut Grade EXCELLENT
Polish EXCELLENT
Symmetry EXCELLENT
Fluorescence SLIGHT
Inscription(s) IGI 510182949
Comments: IDEAL CUT ROUND BRILLIANT



March 7, 2022
IGI Report Number 510182949
NATURAL DIAMOND
ROUND BRILLIANT
5.89 - 5.94 x 3.70 mm
Carat Weight 0.81 CARAT
Color Grade I
Clarity Grade SI 2
Cut Grade EXCELLENT
Polish EXCELLENT
Symmetry EXCELLENT
Fluorescence SLIGHT
Inscription(s) IGI 510182949
Comments: IDEAL CUT ROUND BRILLIANT

