



# INTERNATIONAL GEMOLOGICAL INSTITUTE

## DIAMOND REPORT

**ELECTRONIC COPY**

March 28, 2022  
IGI Report Number 512206033  
Description NATURAL DIAMOND  
Shape and Cutting Style ROUND BRILLIANT  
Measurements 5.99 - 6.06 x 3.88 mm

### GRADING RESULTS

Carat Weight 0.90 CARAT  
Color Grade L  
Clarity Grade VS 1  
Cut Grade VERY GOOD

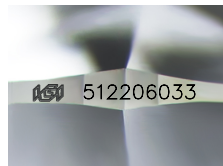
### ADDITIONAL GRADING INFORMATION

Polish EXCELLENT  
Symmetry VERY GOOD  
Fluorescence STRONG

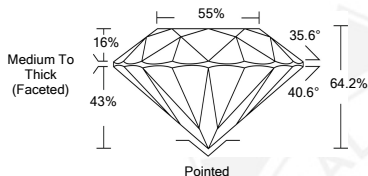
Identification Features CRYSTAL, FEATHER  
Inscription(s) IGI 512206033



512206033



Sample Image Used



### COLOR

D - F	G - J	K - M	N - R	S - Z	FANCY
Colorless	Near Colorless	Slightly Tinted	Very Light Color	Light Color	

### CLARITY

IF	VS <sup>1-2</sup>	VS <sup>1-2</sup>	SI <sup>1-2</sup>	I <sup>1-2</sup>
Internally Flawless	Very Very Slightly Included	Very Slightly Included	Slightly Included	Included



March 28, 2022  
IGI Report Number 512206033  
NATURAL DIAMOND  
ROUND BRILLIANT  
5.99 - 6.06 x 3.88 mm  
Carat Weight 0.90 CARAT  
Color Grade L  
Clarity Grade VS 1  
Cut Grade VERY GOOD  
Polish EXCELLENT  
Symmetry VERY GOOD  
Fluorescence STRONG  
Inscription(s) IGI 512206033



March 28, 2022  
IGI Report Number 512206033  
NATURAL DIAMOND  
ROUND BRILLIANT  
5.99 - 6.06 x 3.88 mm  
Carat Weight 0.90 CARAT  
Color Grade L  
Clarity Grade VS 1  
Cut Grade VERY GOOD  
Polish EXCELLENT  
Symmetry VERY GOOD  
Fluorescence STRONG  
Inscription(s) IGI 512206033

