



# INTERNATIONAL GEMOLOGICAL INSTITUTE

## DIAMOND REPORT

**ELECTRONIC COPY**

May 9, 2022  
IGI Report Number 514286088  
Description NATURAL DIAMOND  
Shape and Cutting Style ROUND BRILLIANT  
Measurements 5.23 - 5.25 x 3.17 mm

### GRADING RESULTS

Carat Weight 0.53 CARAT  
Color Grade H  
Clarity Grade SI 1  
Cut Grade EXCELLENT

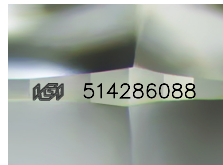
### ADDITIONAL GRADING INFORMATION

Polish EXCELLENT  
Symmetry EXCELLENT  
Fluorescence VERY SLIGHT

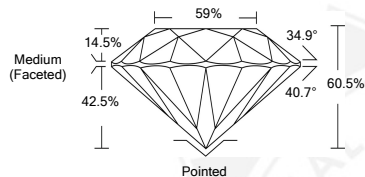
Identification Features CAVITY, CLOUD, CRYSTAL, FEATHER  
Inscription(s) IGI 514286088  
Comments: IDEAL CUT ROUND BRILLIANT



514286088



Sample Image Used



### COLOR

D - F	G - J	K - M	N - R	S - Z	FANCY
Colorless	Near Colorless	Slightly Tinted	Very Light Color	Light Color	

### CLARITY

IF	VS <sup>1-2</sup>	VS <sup>1-2</sup>	SI <sup>1-2</sup>	I <sup>1-2</sup>
Internally Flawless	Very Very Slightly Included	Very Slightly Included	Slightly Included	Included



May 9, 2022  
IGI Report Number 514286088  
NATURAL DIAMOND  
ROUND BRILLIANT  
5.23 - 5.25 x 3.17 mm  
Carat Weight 0.53 CARAT  
Color Grade H  
Clarity Grade SI 1  
Cut Grade EXCELLENT  
Symmetry EXCELLENT  
Fluorescence VERY SLIGHT  
Inscription(s) IGI 514286088  
Comments: IDEAL CUT ROUND BRILLIANT



May 9, 2022  
IGI Report Number 514286088  
NATURAL DIAMOND  
ROUND BRILLIANT  
5.23 - 5.25 x 3.17 mm  
Carat Weight 0.53 CARAT  
Color Grade H  
Clarity Grade SI 1  
Cut Grade EXCELLENT  
Polish EXCELLENT  
Symmetry EXCELLENT  
Fluorescence VERY SLIGHT  
Inscription(s) IGI 514286088  
Comments: IDEAL CUT ROUND BRILLIANT

