



# INTERNATIONAL GEMOLOGICAL INSTITUTE

## DIAMOND REPORT

**ELECTRONIC COPY**

May 12, 2022  
IGI Report Number 515294013  
Description NATURAL DIAMOND  
Shape and Cutting Style ROUND BRILLIANT  
Measurements 4.61 - 4.63 x 2.71 mm

### GRADING RESULTS

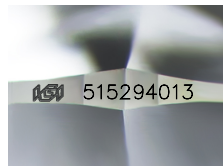
Carat Weight 0.35 CARAT  
Color Grade K  
Clarity Grade VS 2  
Cut Grade EXCELLENT

### ADDITIONAL GRADING INFORMATION

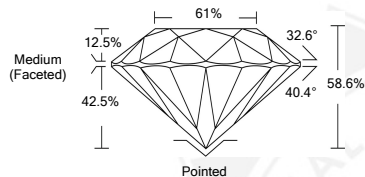
Polish EXCELLENT  
Symmetry EXCELLENT  
Fluorescence NONE  
Identification Features CLOUD, CRYSTAL, FEATHER  
Inscription(s) IGI 515294013



515294013



Sample Image Used



### COLOR

D - F	G - J	K - M	N - R	S - Z	FANCY
Colorless	Near Colorless	Slightly Tinted	Very Light Color	Light Color	

### CLARITY

IF	VS <sup>1-2</sup>	VS <sup>1-2</sup>	SI <sup>1-2</sup>	I <sup>1-2</sup>
Internally Flawless	Very Very Slightly Included	Very Slightly Included	Slightly Included	Included



May 12, 2022  
IGI Report Number 515294013  
NATURAL DIAMOND  
ROUND BRILLIANT  
4.61 - 4.63 x 2.71 mm  
Carat Weight 0.35 CARAT  
Color Grade K  
Clarity Grade VS 2  
Cut Grade EXCELLENT  
Symmetry EXCELLENT  
Fluorescence NONE  
Inscription(s) IGI 515294013



May 12, 2022  
IGI Report Number 515294013  
NATURAL DIAMOND  
ROUND BRILLIANT  
4.61 - 4.63 x 2.71 mm  
Carat Weight 0.35 CARAT  
Color Grade K  
Clarity Grade VS 2  
Cut Grade EXCELLENT  
Polish EXCELLENT  
Symmetry EXCELLENT  
Fluorescence NONE  
Inscription(s) IGI 515294013

