



# INTERNATIONAL GEMOLOGICAL INSTITUTE

## DIAMOND REPORT

**ELECTRONIC COPY**

March 24, 2022  
IGI Report Number 522219892  
Description NATURAL DIAMOND  
Shape and Cutting Style ROUND BRILLIANT  
Measurements 5.17 - 5.27 x 3.38 mm

### GRADING RESULTS

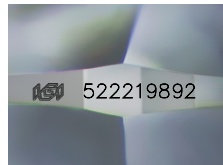
Carat Weight 0.60 CARAT  
Color Grade K  
Clarity Grade VS 1  
Cut Grade VERY GOOD

### ADDITIONAL GRADING INFORMATION

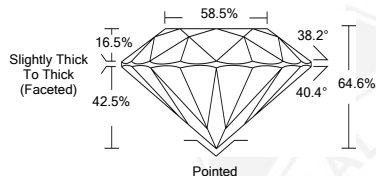
Polish EXCELLENT  
Symmetry VERY GOOD  
Fluorescence NONE  
Identification Features CLOUD, CRYSTAL, FEATHER  
Inscription(s) IGI 522219892



522219892



Sample Image Used



### COLOR

D - F	G - J	K - M	N - R	S - Z	FANCY
Colorless	Near Colorless	Slightly Tinted	Very Light Color	Light Color	

### CLARITY

IF	VS <sup>1-2</sup>	VS <sup>1-2</sup>	SI <sup>1-2</sup>	I <sup>1-2</sup>
Internally Flawless	Very Very Slightly Included	Very Slightly Included	Slightly Included	Included



March 24, 2022  
IGI Report Number 522219892  
NATURAL DIAMOND  
ROUND BRILLIANT  
5.17 - 5.27 x 3.38 mm  
Carat Weight 0.60 CARAT  
Color Grade K  
Clarity Grade VS 1  
Cut Grade VERY GOOD  
Polish EXCELLENT  
Symmetry VERY GOOD  
Fluorescence NONE  
Inscription(s) IGI 522219892



March 24, 2022  
IGI Report Number 522219892  
NATURAL DIAMOND  
ROUND BRILLIANT  
5.17 - 5.27 x 3.38 mm  
Carat Weight 0.60 CARAT  
Color Grade K  
Clarity Grade VS 1  
Cut Grade VERY GOOD  
Polish EXCELLENT  
Symmetry VERY GOOD  
Fluorescence NONE  
Inscription(s) IGI 522219892

