



INTERNATIONAL
GEMOLOGICAL
INSTITUTE

DIAMOND REPORT **ELECTRONIC COPY**

February 5, 2024

IGI Report Number 538283248

Description NATURAL DIAMOND

Shape and Cutting Style PEAR BRILLIANT

Measurements 10.42 x 7.01 x 4.56 mm

GRADING RESULTS

Carat Weight 2.02 CARATS

Color Grade K

Clarity Grade INTERNALLY FLAWLESS

Cut Grade VERY GOOD

ADDITIONAL GRADING INFORMATION

Polish EXCELLENT

Symmetry EXCELLENT

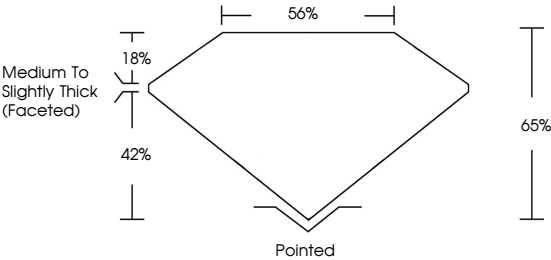
Fluorescence NONE

Inscription(s)  538283248

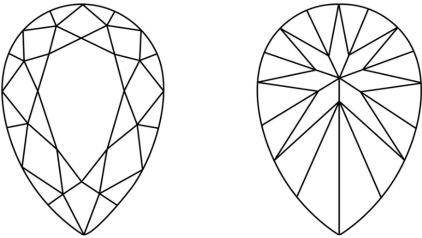


538283248

PROPORTIONS

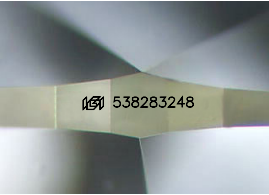


CLARITY CHARACTERISTICS



KEY TO SYMBOLS

Red symbols indicate internal characteristics.
Green symbols indicate external characteristics.



Sample Image Used

COLOR

D - F	G - J	K - M	N - R	S - Z	FANCY
Colorless	Near Colorless	Slightly Tinted	Very Light Color	Light Color	

CLARITY

IF	VS ¹⁻²	VS ¹⁻²	SI ¹⁻²	I ¹⁻³
Internally Flawless	Very Very Slightly Included	Very Slightly Included	Slightly Included	Included



DIAMOND REPORT



February 5, 2024

IGI Report Number 538283248

Description NATURAL DIAMOND

Shape and Cutting Style PEAR BRILLIANT

Measurements 10.42 x 7.01 x 4.56 mm

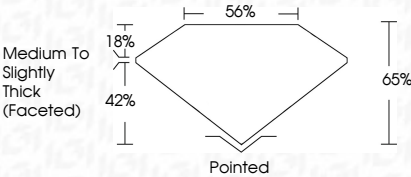
GRADING RESULTS

Carat Weight 2.02 CARATS

Color Grade K

Clarity Grade INTERNALLY FLAWLESS

Cut Grade VERY GOOD



ADDITIONAL GRADING INFORMATION

Polish EXCELLENT

Symmetry EXCELLENT

Fluorescence NONE

Inscription(s)  538283248



IGI

February 5, 2024

IGI Report No 538283248

NATURAL DIAMOND

PEAR BRILLIANT

10.42 x 7.01 x 4.56 mm

2.02 CARATS

K

IF

VERY GOOD

65%

65%

Medium To Slightly Thick (Faceted)

Pointed

EXCELLENT

EXCELLENT

NONE

 538283248