



# INTERNATIONAL GEMOLOGICAL INSTITUTE

## DIAMOND REPORT

**ELECTRONIC COPY**

December 26, 2022

IGI Report Number

560211731

Description

NATURAL DIAMOND

Shape and Cutting Style

ROUND BRILLIANT

Measurements

4.34 - 4.37 x 2.73 mm

## GRADING RESULTS

Carat Weight

0.32 CARAT

Color Grade

K

Clarity Grade

VS 1

Cut Grade

EXCELLENT

## ADDITIONAL GRADING INFORMATION

Polish

EXCELLENT

Symmetry

EXCELLENT

Fluorescence

STRONG

Identification Features

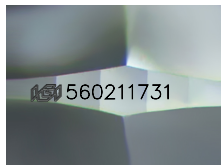
FEATHER, CLOUD, CRYSTAL, ETCH CHANNEL

Inscription(s)

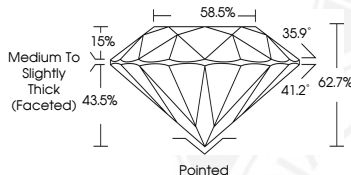
IGI 560211731



560211731



Sample Image Used



## COLOR

D - F	G - J	K - M	N - R	S - Z	FANCY
Colorless	Near Colorless	Slightly Tinted	Very Light Color	Light Color	

## CLARITY

IF	VS <sup>1-2</sup>	VS <sup>1-2</sup>	SI <sup>1-2</sup>	I <sup>1-2</sup>
Internally Flawless	Very Very Slightly Included	Very Slightly Included	Slightly Included	Included

© IGI 2020, International Gemological Institute

FD - 10 20



December 26, 2022

IGI Report Number 560211731

NATURAL DIAMOND

ROUND BRILLIANT

4.34 - 4.37 x 2.73 mm

Carat Weight 0.32 CARAT

Color Grade K

Clarity Grade VS 1

Cut Grade EXCELLENT

Polish EXCELLENT

Symmetry EXCELLENT

Fluorescence STRONG

Inscription(s) IGI 560211731



December 26, 2022

IGI Report Number 560211731

NATURAL DIAMOND

ROUND BRILLIANT

4.34 - 4.37 x 2.73 mm

Carat Weight 0.32 CARAT

Color Grade K

Clarity Grade VS 1

Cut Grade EXCELLENT

Polish EXCELLENT

Symmetry EXCELLENT

Fluorescence STRONG

Inscription(s) IGI 560211731



THIS DOCUMENT WAS PRODUCED WITH THE FOLLOWING SECURITY MEASURES: SPECIAL DOCUMENT PAPER, INK SCREENS, WATERMARK, BACKGROUND DESIGN, HOLOGRAM AND OTHER SECURITY FEATURES NOT LISTED AND DO EXCEED DOCUMENT SECURITY INDUSTRY GUIDELINES.