

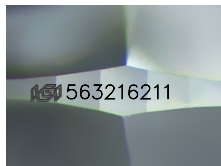


INTERNATIONAL GEMOLOGICAL INSTITUTE

DIAMOND REPORT

ELECTRONIC COPY

563216211



Sample Image Used



February 15, 2023
IGI Report Number 563216211
NATURAL DIAMOND
ROUND BRILLIANT
5.38 - 5.42 x 3.35 mm
Carat Weight 0.61 CARAT
Color Grade K
Clarity Grade I 1
Cut Grade EXCELLENT
Polish EXCELLENT
Symmetry EXCELLENT
Fluorescence SLIGHT
Inscription(s) IGI 563216211
Comments: IDEAL CUT ROUND BRILLIANT

February 15, 2023
IGI Report Number 563216211
Description NATURAL DIAMOND
Shape and Cutting Style ROUND BRILLIANT
Measurements 5.38 - 5.42 x 3.35 mm

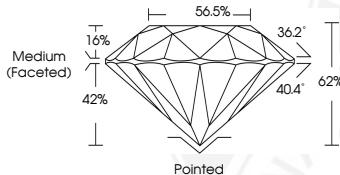
GRADING RESULTS

Carat Weight 0.61 CARAT
Color Grade K
Clarity Grade I 1
Cut Grade EXCELLENT

ADDITIONAL GRADING INFORMATION

Polish EXCELLENT
Symmetry EXCELLENT
Fluorescence SLIGHT

Identification Features CRYSTAL, FEATHER, CLOUD
Inscription(s) IGI 563216211
Comments: IDEAL CUT ROUND BRILLIANT



COLOR

D - F	G - J	K - M	N - R	S - Z	FANCY
Colorless	Near Colorless	Slightly Tinted	Very Light Color	Light Color	

CLARITY

IF	VS ¹⁻²	VS ¹⁻²	SI ¹⁻²	I ¹⁻²
Internally Flawless	Very Very Slightly Included	Very Slightly Included	Slightly Included	Included

© IGI 2020, International Gemological Institute

FD - 10 20



February 15, 2023
IGI Report Number 563216211
NATURAL DIAMOND
ROUND BRILLIANT
5.38 - 5.42 x 3.35 mm
Carat Weight 0.61 CARAT
Color Grade K
Clarity Grade I 1
Cut Grade EXCELLENT
Polish EXCELLENT
Symmetry EXCELLENT
Fluorescence SLIGHT
Inscription(s) IGI 563216211
Comments: IDEAL CUT ROUND BRILLIANT



THIS DOCUMENT WAS PRODUCED WITH THE FOLLOWING SECURITY MEASURES: SPECIAL DOCUMENT PAPER, INK SCREENS, WATERMARK, BACKGROUND DESIGN, HOLOGRAM AND OTHER SECURITY FEATURES NOT LISTED AND DO EXCEED DOCUMENT SECURITY INDUSTRY GUIDELINES.