



# INTERNATIONAL GEMOLOGICAL INSTITUTE

## DIAMOND REPORT

ELECTRONIC COPY

April 27, 2023  
IGI Report Number 574335110  
Description NATURAL DIAMOND  
Shape and Cutting Style ROUND BRILLIANT  
Measurements 5.08 - 5.10 x 3.12 mm

### GRADING RESULTS

Carat Weight 0.50 CARAT  
Color Grade L  
Clarity Grade I 1  
Cut Grade EXCELLENT

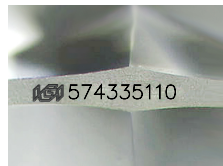
### ADDITIONAL GRADING INFORMATION

Polish EXCELLENT  
Symmetry EXCELLENT  
Fluorescence NONE

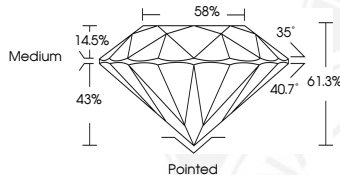
Identification Features FEATHER, CLOUD  
Inscription(s) IGI 574335110  
Comments: IDEAL CUT ROUND BRILLIANT



574335110



Sample Image Used



### COLOR

| D - F     | G - J          | K - M           | N - R            | S - Z       | FANCY |
|-----------|----------------|-----------------|------------------|-------------|-------|
| Colorless | Near Colorless | Slightly Tinted | Very Light Color | Light Color |       |

### CLARITY

| IF                  | VS <sup>1-2</sup>           | VS <sup>1-2</sup>      | SI <sup>1-2</sup> | I <sup>1-2</sup> |
|---------------------|-----------------------------|------------------------|-------------------|------------------|
| Internally Flawless | Very Very Slightly Included | Very Slightly Included | Slightly Included | Included         |

© IGI 2020, International Gemological Institute

FD - 10 20



April 27, 2023  
IGI Report Number 574335110  
NATURAL DIAMOND  
ROUND BRILLIANT  
5.08 - 5.10 x 3.12 mm  
Carat Weight 0.50 CARAT  
Color Grade L  
Clarity Grade I 1  
Cut Grade EXCELLENT  
Polish EXCELLENT  
Symmetry EXCELLENT  
Fluorescence NONE  
Inscription(s) IGI 574335110  
Comments: IDEAL CUT ROUND BRILLIANT



April 27, 2023  
IGI Report Number 574335110  
NATURAL DIAMOND  
ROUND BRILLIANT  
5.08 - 5.10 x 3.12 mm  
Carat Weight 0.50 CARAT  
Color Grade L  
Clarity Grade I 1  
Cut Grade EXCELLENT  
Polish EXCELLENT  
Symmetry EXCELLENT  
Fluorescence NONE  
Inscription(s) IGI 574335110  
Comments: IDEAL CUT ROUND BRILLIANT



THIS DOCUMENT WAS PRODUCED WITH THE FOLLOWING SECURITY MEASURES: SPECIAL DOCUMENT PAPER, INK SCREENS, WATERMARK, BACKGROUND DESIGN, HOLOGRAM AND OTHER SECURITY FEATURES NOT LISTED AND DO EXCEED DOCUMENT SECURITY INDUSTRY GUIDELINES.