



INTERNATIONAL GEMOLOGICAL INSTITUTE

DIAMOND REPORT

ELECTRONIC COPY

October 23, 2023
IGI Report Number 604392377
Description NATURAL DIAMOND
Shape and Cutting Style ROUND BRILLIANT
Measurements 5.16 - 5.19 x 3.23 mm

GRADING RESULTS

Carat Weight 0.53 CARAT
Color Grade D
Clarity Grade SI 2
Cut Grade EXCELLENT

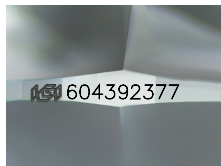
ADDITIONAL GRADING INFORMATION

Polish EXCELLENT
Symmetry EXCELLENT
Fluorescence STRONG

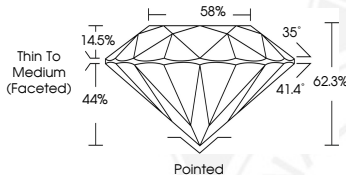
Identification Features FEATHER, CRYSTAL
Inscription(s) IGI 604392377
Comments: IDEAL CUT ROUND BRILLIANT



604392377



Sample Image Used



COLOR

D - F	G - J	K - M	N - R	S - Z	FANCY
Colorless	Near Colorless	Slightly Tinted	Very Light Color	Light Color	

CLARITY

IF	VS ¹⁻²	VS ¹⁻²	SI ¹⁻²	I ¹⁻²
Internally Flawless	Very Very Slightly Included	Very Slightly Included	Slightly Included	Included

© IGI 2020, International Gemological Institute

FD - 10 20



October 23, 2023
IGI Report Number 604392377
NATURAL DIAMOND
ROUND BRILLIANT
5.16 - 5.19 x 3.23 mm
Carat Weight 0.53 CARAT
Color Grade D
Clarity Grade SI 2
Cut Grade EXCELLENT
Polish EXCELLENT
Symmetry EXCELLENT
Fluorescence STRONG
Inscription(s) IGI 604392377
Comments: IDEAL CUT ROUND BRILLIANT



October 23, 2023
IGI Report Number 604392377
NATURAL DIAMOND
ROUND BRILLIANT
5.16 - 5.19 x 3.23 mm
Carat Weight 0.53 CARAT
Color Grade D
Clarity Grade SI 2
Cut Grade EXCELLENT
Polish EXCELLENT
Symmetry EXCELLENT
Fluorescence STRONG
Inscription(s) IGI 604392377
Comments: IDEAL CUT ROUND BRILLIANT



THIS DOCUMENT WAS PRODUCED WITH THE FOLLOWING SECURITY MEASURES: SPECIAL DOCUMENT PAPER, INK SCREENS, WATERMARK, BACKGROUND DESIGN, HOLOGRAM AND OTHER SECURITY FEATURES NOT LISTED AND DO EXCEED DOCUMENT SECURITY INDUSTRY GUIDELINES.