



ELECTRONIC COPY

Measurements	6.73 - 6.80 x 4.20 mm
--------------	-----------------------

Cut Grade EXCELLENT

Comments: IDEAL CUT ROUND BRILLIANT



Medium (Faceted)

55%

15.5%

43.5%

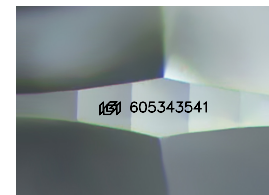
34.5°

41°

62.3%

Pointed

Red symbols indicate internal characteristics.
Green symbols indicate external characteristics.



Sample Image Used

Colorless	Near Colorless	Slightly Tinted	Very Light Color	Light Color
-----------	-------------------	--------------------	---------------------	----------------

Internally Flawless	Very Very Slightly Included	Very Slightly Included	Slightly Included	Included
------------------------	--------------------------------	---------------------------	----------------------	----------



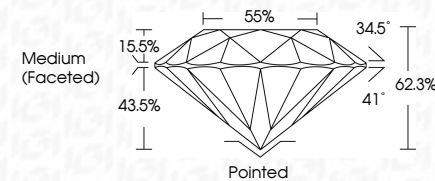
FD - 10 20

THIS DOCUMENT WAS PRODUCED WITH THE FOLLOWING SECURITY MEASURES: SPECIAL DOCUMENT PAPER, INK SCREENS, WATERMARK BACKGROUND DESIGNS, HOLOGRAM AND OTHER SECURITY FEATURES NOT LISTED AND DO EXCEED DOCUMENT SECURITY INDUSTRY GUIDELINES



GRADING RESULTS

Cut Grade EXCELLENT



ADDITIONAL GRADING INFORMATION

Comments: IDEAL CUT ROUND BRILLIANT



IGI

February 5, 2024

February 5, 2024
IGI Report No 605343541
NATURAL DIAMOND
ROUND BRILLIANT

6.73 - 680 x 4.20 mm

1.16 CARAT L

1.16 CARAT L

—

vws2

WS2
EXCELLENT

EXCELLENT

623%

(Faceted)

De laet et al.

Pointed

EXCELLENT
NONE

NONE
605343541