



INTERNATIONAL GEMOLOGICAL INSTITUTE

DIAMOND REPORT

ELECTRONIC COPY

January 23, 2024
IGI Report Number 615385938
Description NATURAL DIAMOND
Shape and Cutting Style ROUND BRILLIANT
Measurements 4.72 - 4.76 x 2.93 mm

GRADING RESULTS

Carat Weight 0.40 CARAT
Color Grade K
Clarity Grade SI 1
Cut Grade EXCELLENT

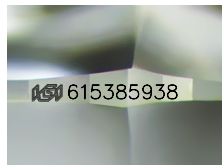
ADDITIONAL GRADING INFORMATION

Polish EXCELLENT
Symmetry EXCELLENT
Fluorescence NONE

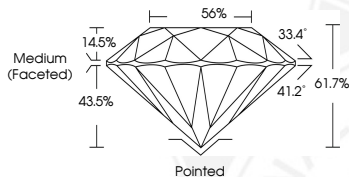
Identification Features FEATHER, CRYSTAL, CLOUD, NEEDLE
Inscription(s) IGI 615385938
Comments: IDEAL CUT ROUND BRILLIANT



615385938



Sample Image Used



COLOR

D - F	G - J	K - M	N - R	S - Z	FANCY
Colorless	Near Colorless	Slightly Tinted	Very Light Color	Light Color	

CLARITY

IF	VVS ¹⁻²	VS ¹⁻²	SI ¹⁻²	I ¹⁻²
Internally Flawless	Very Very Slightly Included	Very Slightly Included	Slightly Included	Included

© IGI 2020, International Gemological Institute

FD - 10 20



THIS DOCUMENT WAS PRODUCED WITH THE FOLLOWING SECURITY MEASURES: SPECIAL DOCUMENT PAPER, INK SCREENS, WATERMARK, BACKGROUND DESIGNS, HOLOGRAM AND OTHER SECURITY FEATURES NOT LISTED AND DO EXCEED DOCUMENT SECURITY INDUSTRY GUIDELINES.



January 23, 2024
IGI Report Number 615385938
NATURAL DIAMOND
ROUND BRILLIANT
4.72 - 4.76 x 2.93 mm
Carat Weight 0.40 CARAT
Color Grade K
Clarity Grade SI 1
Cut Grade EXCELLENT
Polish EXCELLENT
Symmetry EXCELLENT
Fluorescence NONE
Inscription(s) IGI 615385938
Comments: IDEAL CUT ROUND BRILLIANT



January 23, 2024
IGI Report Number 615385938
NATURAL DIAMOND
ROUND BRILLIANT
4.72 - 4.76 x 2.93 mm
Carat Weight 0.40 CARAT
Color Grade K
Clarity Grade SI 1
Cut Grade EXCELLENT
Polish EXCELLENT
Symmetry EXCELLENT
Fluorescence NONE
Inscription(s) IGI 615385938
Comments: IDEAL CUT ROUND BRILLIANT