



INTERNATIONAL GEMOLOGICAL INSTITUTE

DIAMOND REPORT

ELECTRONIC COPY

January 10, 2024
IGI Report Number 616498531
Description NATURAL DIAMOND
Shape and Cutting Style ROUND BRILLIANT
Measurements 4.37 - 4.41 x 2.73 mm

GRADING RESULTS

Carat Weight 0.32 CARAT
Color Grade H
Clarity Grade VVS 2
Cut Grade EXCELLENT

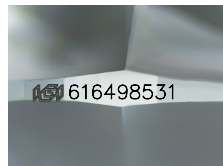
ADDITIONAL GRADING INFORMATION

Polish EXCELLENT
Symmetry EXCELLENT
Fluorescence NONE

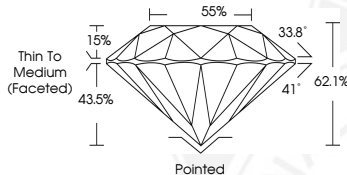
Identification Features CLOUD
Inscription(s) IGI 616498531
Comments: IDEAL CUT ROUND BRILLIANT



616498531



Sample Image Used



COLOR

| D - F | G - J | K - M | N - R | S - Z | FANCY |
|-----------|----------------|-----------------|------------------|-------------|-------|
| Colorless | Near Colorless | Slightly Tinted | Very Light Color | Light Color | |

CLARITY

| IF | VS ¹⁻² | VS ¹⁻² | SI ¹⁻² | I ¹⁻² |
|---------------------|-----------------------------|------------------------|-------------------|------------------|
| Internally Flawless | Very Very Slightly Included | Very Slightly Included | Slightly Included | Included |

© IGI 2020, International Gemological Institute

FD - 10 20



January 10, 2024
IGI Report Number 616498531
NATURAL DIAMOND
ROUND BRILLIANT
4.37 - 4.41 x 2.73 mm
Carat Weight 0.32 CARAT
Color Grade H
Clarity Grade VVS 2
Cut Grade EXCELLENT
Polish EXCELLENT
Symmetry EXCELLENT
Fluorescence NONE
Inscription(s) IGI 616498531
Comments: IDEAL CUT ROUND BRILLIANT



January 10, 2024
IGI Report Number 616498531
NATURAL DIAMOND
ROUND BRILLIANT
4.37 - 4.41 x 2.73 mm
Carat Weight 0.32 CARAT
Color Grade H
Clarity Grade VVS 2
Cut Grade EXCELLENT
Polish EXCELLENT
Symmetry EXCELLENT
Fluorescence NONE
Inscription(s) IGI 616498531
Comments: IDEAL CUT ROUND BRILLIANT



THIS DOCUMENT WAS PRODUCED WITH THE FOLLOWING SECURITY MEASURES: SPECIAL DOCUMENT PAPER, INK SCREENS, WATERMARK, BACKGROUND DESIGN, HOLOGRAM AND OTHER SECURITY FEATURES NOT LISTED AND DO EXCEED DOCUMENT SECURITY INDUSTRY GUIDELINES.