



# INTERNATIONAL GEMOLOGICAL INSTITUTE

## DIAMOND REPORT

**ELECTRONIC COPY**

February 29, 2024  
IGI Report Number  
Description  
Shape and Cutting Style  
Measurements

619459657  
NATURAL DIAMOND  
ROUND BRILLIANT  
5.18 - 5.21 x 3.17 mm

## GRADING RESULTS

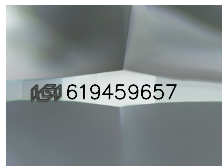
Carat Weight 0.52 CARAT  
Color Grade D  
Clarity Grade SI 2  
Cut Grade EXCELLENT

## ADDITIONAL GRADING INFORMATION

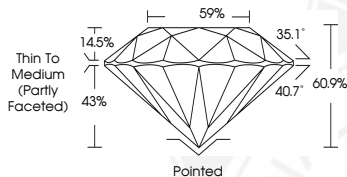
Polish EXCELLENT  
Symmetry EXCELLENT  
Fluorescence NONE  
Identification Features FEATHER, CRYSTAL  
Inscription(s) IGI 619459657



619459657



Sample Image Used



## COLOR

D - F	G - J	K - M	N - R	S - Z	FANCY
Colorless	Near Colorless	Slightly Tinted	Very Light Color	Light Color	

## CLARITY

IF	VS <sup>1-2</sup>	VS <sup>1-2</sup>	SI <sup>1-2</sup>	I <sup>1-2</sup>
Internally Flawless	Very Very Slightly Included	Very Slightly Included	Slightly Included	Included

© IGI 2020, International Gemological Institute

FD - 10 20



THIS DOCUMENT WAS PRODUCED WITH THE FOLLOWING SECURITY MEASURES: SPECIAL DOCUMENT PAPER, INK SCREENS, WATERMARK, BACKGROUND DESIGNS, HOLOGRAM AND OTHER SECURITY FEATURES NOT LISTED AND DO EXCEED DOCUMENT SECURITY INDUSTRY GUIDELINES.



February 29, 2024  
IGI Report Number 619459657  
NATURAL DIAMOND  
ROUND BRILLIANT  
5.18 - 5.21 x 3.17 mm  
Carat Weight 0.52 CARAT  
Color Grade D  
Clarity Grade SI 2  
Cut Grade EXCELLENT  
Polish EXCELLENT  
Symmetry EXCELLENT  
Fluorescence NONE  
Inscription(s) IGI 619459657



February 29, 2024  
IGI Report Number 619459657  
NATURAL DIAMOND  
ROUND BRILLIANT  
5.18 - 5.21 x 3.17 mm  
Carat Weight 0.52 CARAT  
Color Grade D  
Clarity Grade SI 2  
Cut Grade EXCELLENT  
Polish EXCELLENT  
Symmetry EXCELLENT  
Fluorescence NONE  
Inscription(s) IGI 619459657