



INTERNATIONAL GEMOLOGICAL INSTITUTE

DIAMOND REPORT

ELECTRONIC COPY

March 11, 2024

IGI Report Number

619461205

Description

NATURAL DIAMOND

Shape and Cutting Style

ROUND BRILLIANT

Measurements

4.69 - 4.74 x 2.90 mm

GRADING RESULTS

Carat Weight

0.40 CARAT

Color Grade

K

Clarity Grade

SI 2

Cut Grade

EXCELLENT

ADDITIONAL GRADING INFORMATION

Polish

EXCELLENT

Symmetry

EXCELLENT

Fluorescence

NONE

Identification Features

FEATHER, CLOUD

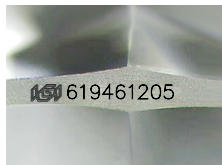
Inscription(s)

IGI 619461205

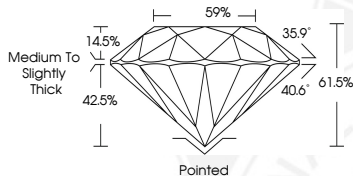
Comments: IDEAL CUT ROUND BRILLIANT



619461205



Sample Image Used



COLOR

D - F	G - J	K - M	N - R	S - Z	FANCY
Colorless	Near Colorless	Slightly Tinted	Very Light Color	Light Color	

CLARITY

IF	VVS ¹⁻²	VS ¹⁻²	SI ¹⁻²	I ¹⁻²
Internally Flawless	Very Very Slightly Included	Very Slightly Included	Slightly Included	Included

© IGI 2020, International Gemological Institute

FD - 10 20



THIS DOCUMENT WAS PRODUCED WITH THE FOLLOWING SECURITY MEASURES: SPECIAL DOCUMENT PAPER, INK SCREENS, WATERMARK, BACKGROUND DESIGNS, HOLOGRAM AND OTHER SECURITY FEATURES NOT LISTED AND DO EXCEED DOCUMENT SECURITY INDUSTRY GUIDELINES.



March 11, 2024

IGI Report Number 619461205

NATURAL DIAMOND

ROUND BRILLIANT

4.69 - 4.74 x 2.90 mm

Carat Weight 0.40 CARAT

Color Grade K

Clarity Grade SI 2

Cut Grade EXCELLENT

Polish EXCELLENT

Symmetry EXCELLENT

Fluorescence NONE

Inscription(s) IGI 619461205

Comments: IDEAL CUT ROUND BRILLIANT



March 11, 2024

IGI Report Number 619461205

NATURAL DIAMOND

ROUND BRILLIANT

4.69 - 4.74 x 2.90 mm

Carat Weight 0.40 CARAT

Color Grade K

Clarity Grade SI 2

Cut Grade EXCELLENT

Polish EXCELLENT

Symmetry EXCELLENT

Fluorescence NONE

Inscription(s) IGI 619461205

Comments: IDEAL CUT ROUND BRILLIANT