



INTERNATIONAL  
GEMOLOGICAL  
INSTITUTE

DIAMOND REPORT

ELECTRONIC COPY

March 22, 2024

IGI Report Number 621443581

Description NATURAL DIAMOND

Shape and Cutting Style ROUND BRILLIANT

Measurements 8.03 - 8.08 x 5.02 mm

GRADING RESULTS

Carat Weight 2.02 CARATS

Color Grade K

Clarity Grade VVS 1

Cut Grade EXCELLENT

ADDITIONAL GRADING INFORMATION

Polish EXCELLENT

Symmetry EXCELLENT

Fluorescence NONE

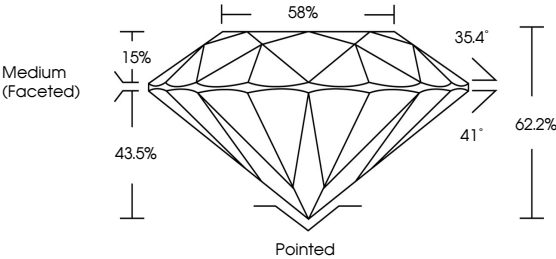
Inscription(s) IGI 621443581

Comments: IDEAL CUT ROUND BRILLIANT

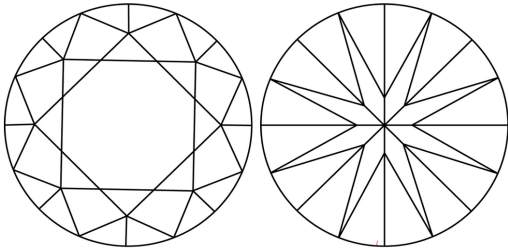


621443581

PROPORTIONS

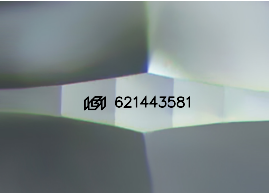


CLARITY CHARACTERISTICS



KEY TO SYMBOLS

Red symbols indicate internal characteristics.  
Green symbols indicate external characteristics.



Sample Image Used

COLOR

D - F	G - J	K - M	N - R	S - Z	FANCY
Colorless	Near Colorless	Slightly Tinted	Very Light Color	Light Color	

CLARITY

IF	VVS <sup>1-2</sup>	VS <sup>1-2</sup>	SI <sup>1-2</sup>	I <sup>1-3</sup>
Internally Flawless	Very Very Slightly Included	Very Slightly Included	Slightly Included	Included



DIAMOND REPORT



March 22, 2024

IGI Report Number 621443581

Description NATURAL DIAMOND

Shape and Cutting Style ROUND BRILLIANT

Measurements 8.03 - 8.08 x 5.02 mm

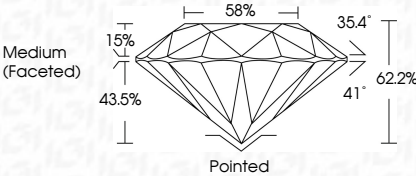
**GRADING RESULTS**

Carat Weight 2.02 CARATS

Color Grade K

Clarity Grade VVS 1

Cut Grade EXCELLENT



ADDITIONAL GRADING INFORMATION

Polish EXCELLENT

Symmetry EXCELLENT

Fluorescence NONE

Inscription(s) IGI 621443581

Comments: IDEAL CUT ROUND BRILLIANT



IGI

March 22, 2024

IGI Report No 621443581

NATURAL DIAMOND

ROUND BRILLIANT

8.03 - 8.08 x 5.02 mm

Carat Weight 2.02 CARATS

Color Grade K

Clarity Grade VVS 1

Cut Grade EXCELLENT

Depth 62.2%

Table 58%

Grade Medium (Faceted)

Cut Pointed

Polish EXCELLENT

Symmetry EXCELLENT

Fluorescence NONE

Inscription(s) IGI 621443581

Comments: IDEAL CUT ROUND BRILLIANT