



INTERNATIONAL GEMOLOGICAL INSTITUTE

DIAMOND REPORT

ELECTRONIC COPY

April 15, 2024

IGI Report Number

621470870

Description

NATURAL DIAMOND

Shape and Cutting Style

ROUND BRILLIANT

Measurements

4.47 - 4.49 x 2.79 mm

GRADING RESULTS

Carat Weight 0.35 CARAT

Color Grade K

Clarity Grade VS 1

Cut Grade EXCELLENT

ADDITIONAL GRADING INFORMATION

Polish EXCELLENT

Symmetry EXCELLENT

Fluorescence NONE

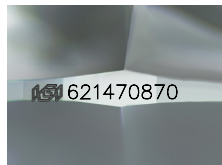
Identification Features CLOUD, CRYSTAL

Inscription(s) IGI 621470870

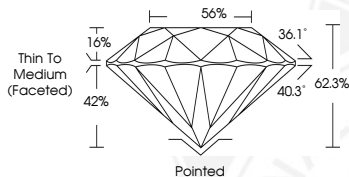
Comments: IDEAL CUT ROUND BRILLIANT



621470870



Sample Image Used



COLOR

D - F	G - J	K - M	N - R	S - Z	FANCY
Colorless	Near Colorless	Slightly Tinted	Very Light Color	Light Color	

CLARITY

IF	VVS ¹⁻²	VS ¹⁻²	SI ¹⁻²	I ¹⁻²
Internally Flawless	Very Very Slightly Included	Very Slightly Included	Slightly Included	Included

© IGI 2020, International Gemological Institute

FD - 10 20

THIS DOCUMENT WAS PRODUCED WITH THE FOLLOWING SECURITY MEASURES: SPECIAL DOCUMENT PAPER, INK SCREENS, WATERMARK, BACKGROUND DESIGNS, HOLOGRAM AND OTHER SECURITY FEATURES NOT LISTED AND DO EXCEED DOCUMENT SECURITY INDUSTRY GUIDELINES.



April 15, 2024

IGI Report Number 621470870

NATURAL DIAMOND

ROUND BRILLIANT

4.47 - 4.49 x 2.79 mm

Carat Weight 0.35 CARAT

Color Grade K

Clarity Grade VS 1

Cut Grade EXCELLENT

Polish EXCELLENT

Symmetry EXCELLENT

Fluorescence NONE

Inscription(s) IGI 621470870

Comments: IDEAL CUT ROUND BRILLIANT



April 15, 2024

IGI Report Number 621470870

NATURAL DIAMOND

ROUND BRILLIANT

4.47 - 4.49 x 2.79 mm

Carat Weight 0.35 CARAT

Color Grade K

Clarity Grade VS 1

Cut Grade EXCELLENT

Polish EXCELLENT

Symmetry EXCELLENT

Fluorescence NONE

Inscription(s) IGI 621470870

Comments: IDEAL CUT ROUND BRILLIANT