



DIAMOND REPORT **ELECTRONIC COPY**

February 20, 2024

IGI Report Number 621474967

Description NATURAL DIAMOND

Shape and Cutting Style ROUND BRILLIANT

Measurements 6.70 - 6.74 x 4.11 mm

GRADING RESULTS

Carat Weight 1.16 CARAT

Color Grade K

Clarity Grade VS 2

Cut Grade EXCELLENT

ADDITIONAL GRADING INFORMATION

Polish EXCELLENT

Symmetry EXCELLENT

Fluorescence VERY SLIGHT

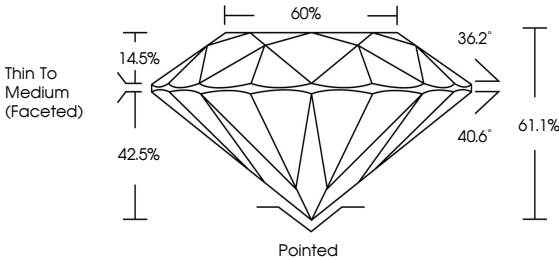
Inscription(s) 621474967

Comments: IDEAL CUT ROUND BRILLIANT

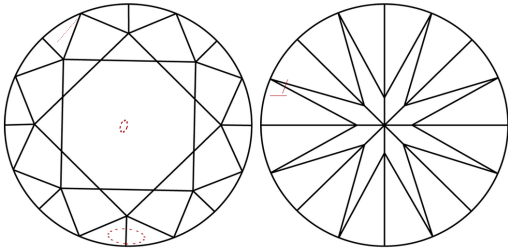


621474967

PROPORTIONS

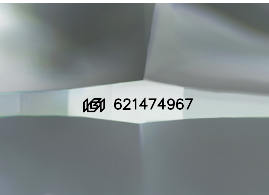


CLARITY CHARACTERISTICS



KEY TO SYMBOLS

Red symbols indicate internal characteristics.
Green symbols indicate external characteristics.



Sample Image Used

COLOR

D - F	G - J	K - M	N - R	S - Z	FANCY
Colorless	Near Colorless	Slightly Tinted	Very Light Color	Light Color	

CLARITY

IF	VS ¹⁻²	VS ¹⁻²	SI ¹⁻²	I ¹⁻³
Internally Flawless	Very Very Slightly Included	Very Slightly Included	Slightly Included	Included



DIAMOND REPORT



February 20, 2024

IGI Report Number 621474967

Description NATURAL DIAMOND

Shape and Cutting Style ROUND BRILLIANT

Measurements 6.70 - 6.74 x 4.11 mm

GRADING RESULTS

Carat Weight 1.16 CARAT

Color Grade K

Clarity Grade VS 2

Cut Grade EXCELLENT

ADDITIONAL GRADING INFORMATION

Polish EXCELLENT

Symmetry EXCELLENT

Fluorescence VERY SLIGHT

Inscription(s) 621474967

Comments: IDEAL CUT ROUND BRILLIANT



IGI

February 20, 2024

IGI Report No 621474967

NATURAL DIAMOND

ROUND BRILLIANT

6.70 - 6.74 x 4.11 mm

Carat Weight 1.16 CARAT

Color Grade K

Clarity Grade VS2

Cut Grade EXCELLENT

Depth 61.1%

Table 60%

Girdle Thin To Medium (Faceted)

Culet Pointed

Polish EXCELLENT

Symmetry EXCELLENT

Fluorescence VERY SLIGHT

Inscription(s) 621474967

Comments: IDEAL CUT ROUND BRILLIANT