



INTERNATIONAL GEMOLOGICAL INSTITUTE

DIAMOND REPORT

ELECTRONIC COPY

April 15, 2024
IGI Report Number 625466189
Description NATURAL DIAMOND
Shape and Cutting Style ROUND BRILLIANT
Measurements 4.75 - 4.77 x 2.90 mm

GRADING RESULTS

Carat Weight 0.40 CARAT
Color Grade K
Clarity Grade SI 1
Cut Grade EXCELLENT

ADDITIONAL GRADING INFORMATION

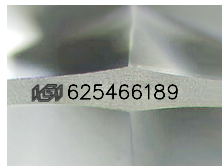
Polish EXCELLENT
Symmetry EXCELLENT
Fluorescence NONE

Identification Features FEATHER
Inscription(s) IGI 625466189

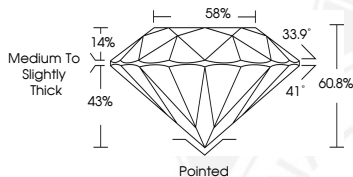
Comments: IDEAL CUT ROUND BRILLIANT



625466189



Sample Image Used



COLOR

D - F	G - J	K - M	N - R	S - Z	FANCY
Colorless	Near Colorless	Slightly Tinted	Very Light Color	Light Color	

CLARITY

IF	VVS ¹⁻²	VS ¹⁻²	SI ¹⁻²	I ¹⁻²
Internally Flawless	Very Very Slightly Included	Very Slightly Included	Slightly Included	Included

© IGI 2020, International Gemological Institute

FD - 10 20



THIS DOCUMENT WAS PRODUCED WITH THE FOLLOWING SECURITY MEASURES: SPECIAL DOCUMENT PAPER, INK SCREENS, WATERMARK, BACKGROUND DESIGNS, HOLOGRAM AND OTHER SECURITY FEATURES NOT LISTED AND DO EXCEED DOCUMENT SECURITY INDUSTRY GUIDELINES.



April 15, 2024
IGI Report Number 625466189
NATURAL DIAMOND
ROUND BRILLIANT
4.75 - 4.77 x 2.90 mm
Carat Weight 0.40 CARAT
Color Grade K
Clarity Grade SI 1
Cut Grade EXCELLENT
Polish EXCELLENT
Symmetry EXCELLENT
Fluorescence NONE
Inscription(s) IGI 625466189
Comments: IDEAL CUT ROUND BRILLIANT



April 15, 2024
IGI Report Number 625466189
NATURAL DIAMOND
ROUND BRILLIANT
4.75 - 4.77 x 2.90 mm
Carat Weight 0.40 CARAT
Color Grade K
Clarity Grade SI 1
Cut Grade EXCELLENT
Polish EXCELLENT
Symmetry EXCELLENT
Fluorescence NONE
Inscription(s) IGI 625466189
Comments: IDEAL CUT ROUND BRILLIANT