



**ELECTRONIC COPY**

## DIAMOND REPORT

May 6, 2024	
IGI Report Number	625484105
Description	NATURAL DIAMOND
Shape and Cutting Style	EMERALD CUT
Measurements	7.14 X 5.10 X 3.59 MM

## GRADING RESULTS

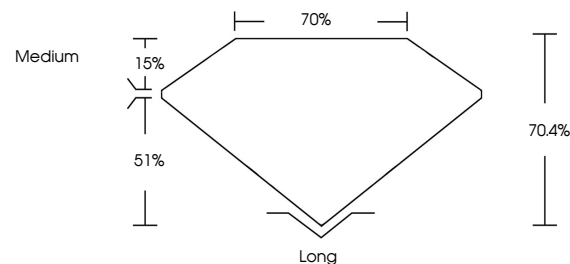
Carat Weight	1.30 CARAT
Color Grade	H
Clarity Grade	VS 2
Cut Grade	VERY GOOD

### ADDITIONAL GRADING INFORMATION

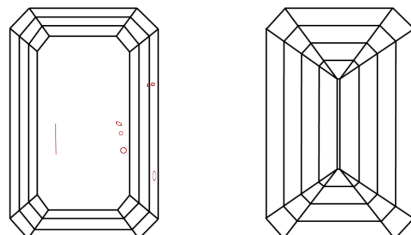
Polish	EXCELLENT
Symmetry	EXCELLENT
Fluorescence	NONE
Inscription(s)	131 625484105

625484105  
Report verification at [igi.org](https://igi.org)

## PROPORTIONS

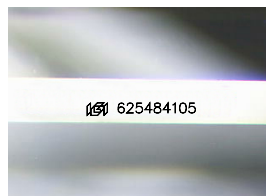


## CLARITY CHARACTERISTICS



## KEY TO SYMBOLS

Red symbols indicate internal characteristics.  
Green symbols indicate external characteristics.



Sample Image Used

**COLOR**

D - F	G - J	K - M	N - R	S - Z	FANCY
Colorless	Near Colorless	Slightly Tinted	Very Light Color	Light Color	

## CLARITY

IF	VVS <sup>1-2</sup>	VS <sup>1-2</sup>	SI <sup>1-2</sup>	I <sup>1-3</sup>
Internally Flawless	Very Very Slightly Included	Very Slightly Included	Slightly Included	Included



© IGI 2020, International Gemological Institute

FD - 10 20

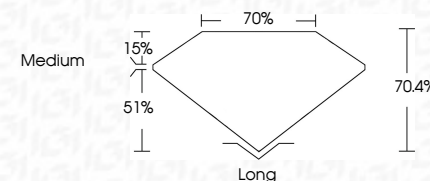
DIAMOND REPORT



May 6, 2024	
IGI Report Number	625484105
Description	NATURAL DIAMOND
Shape and Cutting Style	EMERALD CUT
Measurements	7.14 X 5.10 X 3.59 MM

## GRADING RESULTS

Carat Weight	1.30 CARAT
Color Grade	H
Clarity Grade	VS 2
Cut Grade	VERY GOOD



### ADDITIONAL GRADING INFORMATION

Polish	EXCELLENT
Symmetry	EXCELLENT
Fluorescence	NONE
Inscription(s)	151 625484105



IG

May 6, 2024  
 IGI Report No 625484105  
 EMERALD CIT

	Carat Weight	VS 2	Long
	Color Grade	VERY GOOD 70-89%	EXCELLENT EXCELLENT
	Clarity Grade	H	NONE
	Cut Grade	Medium	Absent / Noted
	Depth		Symmetry
	Table		Fluorescence
	Girdle		Inclusions (%)
	Culet		
	Polish		



THIS DOCUMENT WAS PRODUCED WITH THE FOLLOWING SECURITY MEASURES: SPECIAL DOCUMENT PAPER, INK SCREENS, WATERMARK, BACKGROUND DESIGNS, HOLOGRAM AND OTHER SECURITY FEATURES NOT LISTED AND DO EXCEED DOCUMENT SECURITY INDUSTRY GUIDELINES

**www.igi.org**