



ELECTRONIC COPY

DIAMOND REPORT

May 14, 2024	
IGI Report Number	627493594
Description	NATURAL DIAMOND
Shape and Cutting Style	ROUND BRILLIANT
Measurements	6.82 - 6.84 X 4.07 MM

GRADING RESULTS

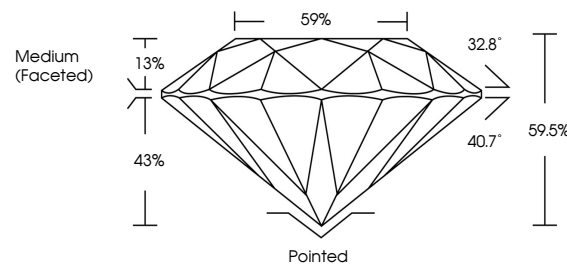
Carat Weight	1.16 CARAT
Color Grade	J
Clarity Grade	SI 1
Cut Grade	EXCELLENT

ADDITIONAL GRADING INFORMATION

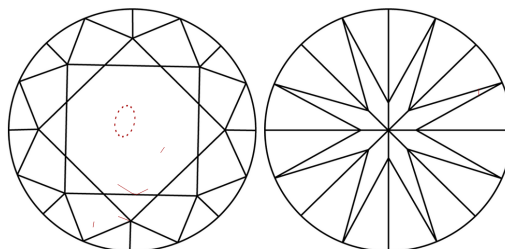
Polish	EXCELLENT
Symmetry	EXCELLENT
Fluorescence	NONE
Inscription(s)	 627493594
Comments: IDEAL CUT ROUND BRILLIANT	

627493594
Report verification at igi.org

PROPORTIONS

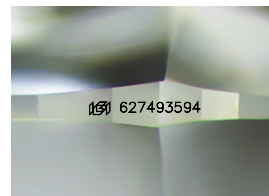


CLARITY CHARACTERISTICS



KEY TO SYMBOLS

Red symbols indicate internal characteristics.
Green symbols indicate external characteristics.



Sample Image Used

COLOR

D - F	G - J	K - M	N - R	S - Z	FANCY
Colorless	Near Colorless	Slightly Tinted	Very Light Color	Light Color	

CLARITY

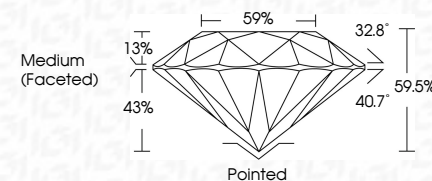
IF	WS ¹⁻²	VS ¹⁻²	SI ¹⁻²	I ¹⁻³
Internally Flawless	Very Very Slightly Included	Very Slightly Included	Slightly Included	Included



May 14, 2024	
IGI Report Number	627493594
Description	NATURAL DIAMOND
Shape and Cutting Style	ROUND BRILLIANT
Measurements	6.82 - 6.84 X 4.07 MM

GRADING RESULTS

Carat Weight	1.16 CARAT
Color Grade	J
Clarity Grade	SI 1
Cut Grade	EXCELLENT



ADDITIONAL GRADING INFORMATION

Polish	EXCELLENT
Symmetry	EXCELLENT
Fluorescence	NONE
Inscription(s)	(GSI) 627493594
Comments: IDEAL CUT ROUND BRILLIANT	



IG



© IGI 2020, International Gemological Institute

FD - 10 20



THIS DOCUMENT WAS PRODUCED WITH THE FOLLOWING SECURITY MEASURES: SPECIAL DOCUMENT PAPER, INK SCREENS, WATERMARK, BACKGROUND DESIGNS, HOLOGRAM AND OTHER SECURITY FEATURES NOT LISTED AND DO EXCEED DOCUMENT SECURITY INDUSTRY GUIDELINE

www.igi.org

May 14, 2024	
GI Report No. 627463594	
ROUND BRILLIANT	
Carat Weight	6.82 - 6.84 X 4.07 MM
Color Grade	
Clarity Grade	
Cut Grade	
Depth	
Table	
Girdle	
Med	
Culet	
Polish	
Symmetry	
Fluorescence	
Inscription(s)	
Comments:	
IDEAL CUT ROUND BRILLIANT	