



ELECTRONIC COPY

DIAMOND REPORT

May 17, 2024	
IGI Report Number	627493598
Description	NATURAL DIAMOND
Shape and Cutting Style	ROUND BRILLIANT
Measurements	6.80 - 6.84 X 4.23 MM

GRADING RESULTS

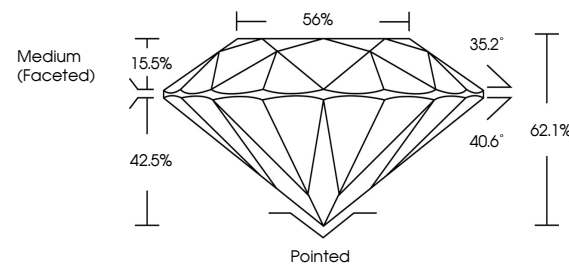
Carat Weight	1.21 CARAT
Color Grade	K
Clarity Grade	INTERNALLY FLAWLESS
Cut Grade	EXCELLENT

ADDITIONAL GRADING INFORMATION

Polish	EXCELLENT
Symmetry	EXCELLENT
Fluorescence	NONE
Inscription(s)	 627493598
Comments: IDEAL CUT ROUND BRILLIANT	

627493598
Report verification at igi.org

PROPORTIONS

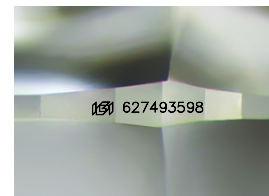


CLARITY CHARACTERISTICS



KEY TO SYMBOLS

Red symbols indicate internal characteristics.
Green symbols indicate external characteristics.



Sample Image Used

COLOR

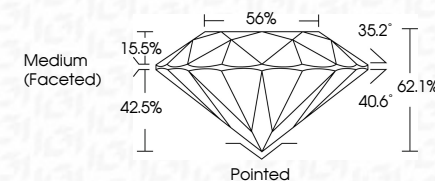
D - F	G - J	K - M	N - R	S - Z	FANCY
Colorless	Near Colorless	Slightly Tinted	Very Light Color	Light Color	

CLARITY

IF	VS ¹⁻²	VS ¹⁻²	SI ¹⁻²	I ¹⁻³
Internally Flawless	Very Very Slightly Included	Very Slightly Included	Slightly Included	Included



May 17, 2024	
IGI Report Number	627493598
Description	NATURAL DIAMOND
Shape and Cutting Style	ROUND BRILLIANT
Measurements	6.80 - 6.84 X 4.23 MM
GRADING RESULTS	
Carat Weight	1.21 CARAT
Color Grade	K
Clarity Grade	INTERNALLY FLAWLESS
Cut Grade	EXCELLENT



ADDITIONAL GRADING INFORMATION

Polish	EXCELLENT
Symmetry	EXCELLENT
Fluorescence	NONE
Inscription(s)	(G) 627493598
Comments: IDEAL CUT ROUND BRILLIANT	



© IGI 2020, International Gemological Institute

FD - 10 20



THIS DOCUMENT WAS PRODUCED WITH THE FOLLOWING SECURITY MEASURES: SPECIAL DOCUMENT PAPER, INK SCREENS, WATERMARK, BACKGROUND DESIGNS, HOLOGRAM AND OTHER SECURITY FEATURES NOT LISTED AND DO EXCEED DOCUMENT SECURITY INDUSTRY GUIDELINES

www.igi.org

May 17, 2024
GI Report No 627493598
POUND BRILLIANT

1.80 - 6.84 X 4.28 MM	Carat Weight	1.21 CARAT
	Color Grade	K
	Clarity Grade	IF
	Cut Grade	EXCELLENT
	Depth	62.1%
	Table	56%
	Grade	Medium (Faceted)
	Culet	Pointed
	Polish	EXCELLENT
	Symmetry	EXCELLENT
	Fluorescence	NONE
	Reported by	gem 4777 001062

Comments: