



ELECTRONIC COPY

DIAMOND REPORT

July 26, 2025	
IGI Report Number	628465821
Description	NATURAL DIAMOND
Shape and Cutting Style	ROUND BRILLIANT
Measurements	6.51 - 6.54 X 3.92 MM

GRADING RESULTS

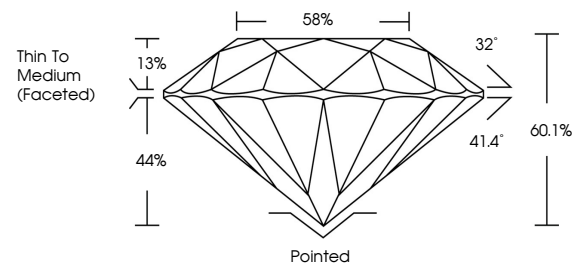
Carat Weight	1.00 CARAT
Color Grade	I
Clarity Grade	SI 1
Cut Grade	EXCELLENT

ADDITIONAL GRADING INFORMATION

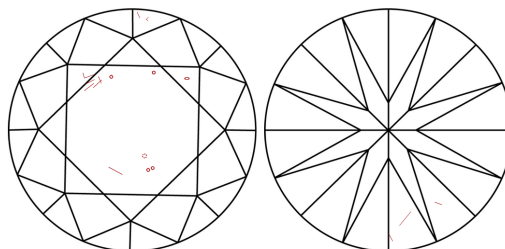
Polish	EXCELLENT
Symmetry	EXCELLENT
Fluorescence	VERY SLIGHT
Inscription(s)	131 628465821

628465821
Report verification at igi.org

PROPORTIONS

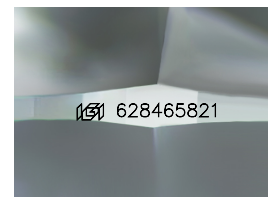


CLARITY CHARACTERISTICS



KEY TO SYMBOLS

Red symbols indicate internal characteristics.
Green symbols indicate external characteristics.



Sample Image Used

COLOR

D - F	G - J	K - M	N - R	S - Z	FANCY
Colorless	Near Colorless	Slightly Tinted	Very Light Color	Light Color	

CLARITY

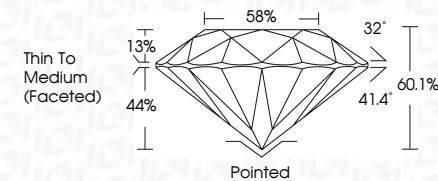
IF	VVS ¹⁻²	VS ¹⁻²	SI ¹⁻²	I ¹⁻³
Internally Flawless	Very Very Slightly Included	Very Slightly Included	Slightly Included	Included



July 26, 2025	
IGI Report Number	628465821
Description	NATURAL DIAMOND
Shape and Cutting Style	ROUND BRILLIANT
Measurements	6.51 - 6.54 X 3.92 MM

GRADING RESULTS

Carat Weight	1.00 CARAT
Color Grade	I
Clarity Grade	SI 1
Cut Grade	EXCELLENT



ADDITIONAL GRADING INFORMATION

Polish	EXCELLENT
Symmetry	EXCELLENT
Fluorescence	VERY SLIGHT
Inscription(s)	1561 628465821



IG



© IGI 2020, International Gemological Institute

FD - 10 20



THIS DOCUMENT WAS PRODUCED WITH THE FOLLOWING SECURITY MEASURES: SPECIAL DOCUMENT PAPER, INK SCREENS, WATERMARK, BACKGROUND DESIGNS, HOLOGRAM AND OTHER SECURITY FEATURES NOT LISTED AND DO EXCEED DOCUMENT SECURITY INDUSTRY GUIDELINES

www.igi.org

July 26, 2025
GI Report No 628465821
ROUND BRILLIANT

IGI Report No 62846582
 POLYIND BRILLIANT

ROUND BRILLIANT

Carat Weight
Color Grade

Clarity Grade	Cut Grade
I1	I1
I2	I2
I3	I3
I4	I4
I5	I5
I6	I6
I7	I7
I8	I8
I9	I9
I10	I10
I11	I11
I12	I12
I13	I13
I14	I14
I15	I15
I16	I16
I17	I17
I18	I18
I19	I19
I20	I20
I21	I21
I22	I22
I23	I23
I24	I24
I25	I25
I26	I26
I27	I27
I28	I28
I29	I29
I30	I30
I31	I31
I32	I32
I33	I33
I34	I34
I35	I35
I36	I36
I37	I37
I38	I38
I39	I39
I40	I40
I41	I41
I42	I42
I43	I43
I44	I44
I45	I45
I46	I46
I47	I47
I48	I48
I49	I49
I50	I50
I51	I51
I52	I52
I53	I53
I54	I54
I55	I55
I56	I56
I57	I57
I58	I58
I59	I59
I60	I60
I61	I61
I62	I62
I63	I63
I64	I64
I65	I65
I66	I66
I67	I67
I68	I68
I69	I69
I70	I70
I71	I71
I72	I72
I73	I73
I74	I74
I75	I75
I76	I76
I77	I77
I78	I78
I79	I79
I80	I80
I81	I81
I82	I82
I83	I83
I84	I84
I85	I85
I86	I86
I87	I87
I88	I88
I89	I89
I90	I90
I91	I91
I92	I92
I93	I93
I94	I94
I95	I95
I96	I96
I97	I97
I98	I98
I99	I99
I100	I100

Depth	100	150	200	250	300	350	400	450	500	550	600	650	700	750	800	850	900	950	1000
Table	100	150	200	250	300	350	400	450	500	550	600	650	700	750	800	850	900	950	1000
Girdle	100	150	200	250	300	350	400	450	500	550	600	650	700	750	800	850	900	950	1000

Culet	
Culmen	

Polish
Symmetry

Fluorescence	Inscription(s)
--------------	----------------