



# INTERNATIONAL GEMOLOGICAL INSTITUTE

## DIAMOND REPORT

ELECTRONIC COPY

April 15, 2024

IGI Report Number

629438903

Description

NATURAL DIAMOND

Shape and Cutting Style

ROUND BRILLIANT

Measurements

5.71 - 5.74 x 3.57 mm

## GRADING RESULTS

Carat Weight

0.72 CARAT

Color Grade

K

Clarity Grade

VS 1

Cut Grade

EXCELLENT

## ADDITIONAL GRADING INFORMATION

Polish

EXCELLENT

Symmetry

EXCELLENT

Fluorescence

NONE

Identification Features

FEATHER, CLOUD

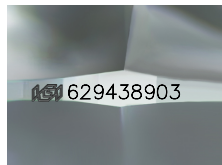
Inscription(s)

IGI 629438903

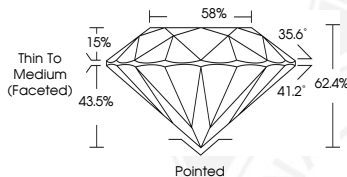
Comments: IDEAL CUT ROUND BRILLIANT



629438903



Sample Image Used



## COLOR

D - F	G - J	K - M	N - R	S - Z	FANCY
Colorless	Near Colorless	Slightly Tinted	Very Light Color	Light Color	

## CLARITY

IF	VVS <sup>1-2</sup>	VS <sup>1-2</sup>	SI <sup>1-2</sup>	I <sup>1-2</sup>
Internally Flawless	Very Very Slightly Included	Very Slightly Included	Slightly Included	Included

© IGI 2020, International Gemological Institute

FD - 10 20

THIS DOCUMENT WAS PRODUCED WITH THE FOLLOWING SECURITY MEASURES: SPECIAL DOCUMENT PAPER, INK SCREENS, WATERMARK, BACKGROUND DESIGNS, HOLOGRAM AND OTHER SECURITY FEATURES NOT LISTED AND DO EXCEED DOCUMENT SECURITY INDUSTRY GUIDELINES.



April 15, 2024

IGI Report Number 629438903

NATURAL DIAMOND

ROUND BRILLIANT

5.71 - 5.74 x 3.57 mm

Carat Weight 0.72 CARAT

Color Grade K

Clarity Grade VS 1

Cut Grade EXCELLENT

Polish EXCELLENT

Symmetry EXCELLENT

Fluorescence NONE

Inscription(s) IGI 629438903

Comments: IDEAL CUT ROUND BRILLIANT



April 15, 2024

IGI Report Number 629438903

NATURAL DIAMOND

ROUND BRILLIANT

5.71 - 5.74 x 3.57 mm

Carat Weight 0.72 CARAT

Color Grade K

Clarity Grade VS 1

Cut Grade EXCELLENT

Polish EXCELLENT

Symmetry EXCELLENT

Fluorescence NONE

Inscription(s) IGI 629438903

Comments: IDEAL CUT ROUND BRILLIANT