



# INTERNATIONAL GEMOLOGICAL INSTITUTE

## DIAMOND REPORT

May 20, 2024  
IGI Report Number **629439688**  
Description **NATURAL DIAMOND**  
Shape and Cutting Style **ROUND BRILLIANT**  
Measurements **4.87 - 4.88 X 2.81 MM**

## GRADING RESULTS

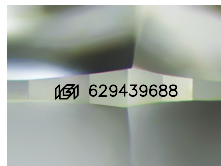
Carat Weight **0.40 CARAT**  
Color Grade **I**  
Clarity Grade **SI 1**  
Cut Grade **EXCELLENT**

## ADDITIONAL GRADING INFORMATION

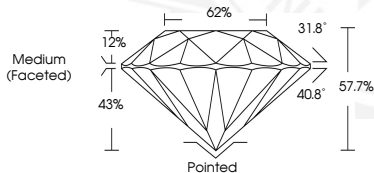
Polish **EXCELLENT**  
Symmetry **EXCELLENT**  
Fluorescence **NONE**  
Identification Features **FEATHER, CLOUD, CRYSTAL, NEEDLE**  
Inscription(s) **IGI 629439688**

ELECTRONIC COPY

629439688



Sample Image Used



May 20, 2024  
IGI Report Number **629439688**  
ROUND BRILLIANT  
NATURAL DIAMOND  
4.87 - 4.88 X 2.81 MM  
Carat Weight **0.40 CARAT**  
Color Grade **I**  
Clarity Grade **SI 1**  
Cut Grade **EXCELLENT**  
Polish **EXCELLENT**  
Symmetry **EXCELLENT**  
Fluorescence **NONE**  
Inscription(s) **IGI 629439688**



May 20, 2024  
IGI Report Number **629439688**  
ROUND BRILLIANT  
NATURAL DIAMOND  
4.87 - 4.88 X 2.81 MM  
Carat Weight **0.40 CARAT**  
Color Grade **I**  
Clarity Grade **SI 1**  
Cut Grade **EXCELLENT**  
Polish **EXCELLENT**  
Symmetry **EXCELLENT**  
Fluorescence **NONE**  
Inscription(s) **IGI 629439688**



THIS DOCUMENT WAS PRODUCED WITH THE FOLLOWING SECURITY MEASURES: SPECIAL DOCUMENT PAPER, INK SCREENS, WATERMARK, BACKGROUND DESIGNS, HOLOGRAM AND OTHER SECURITY FEATURES NOT LISTED AND DO EXCEED DOCUMENT SECURITY INDUSTRY GUIDELINES.

For terms & conditions and to verify this report, please visit [www.igi.org](http://www.igi.org)