



ELECTRONIC COPY

DIAMOND REPORT

May 22, 2024	
IGI Report Number	629459519
Description	NATURAL DIAMOND
Shape and Cutting Style	ROUND BRILLIANT
Measurements	7.30 - 7.35 X 4.61 MM

GRADING RESULTS

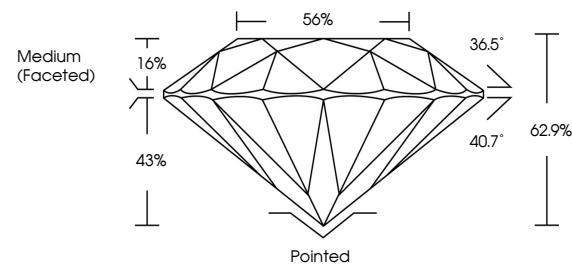
Carat Weight	1.53 CARAT
Color Grade	H
Clarity Grade	VVS 2
Cut Grade	EXCELLENT

ADDITIONAL GRADING INFORMATION

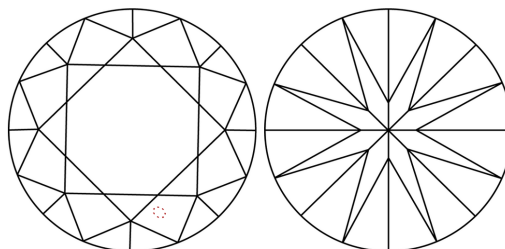
Polish	EXCELLENT
Symmetry	EXCELLENT
Fluorescence	VERY SLIGHT
Inscription(s)	151 629459519

629459519
Report verification at igi.org

PROPORTIONS

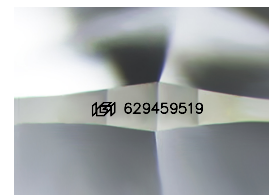


CLARITY CHARACTERISTICS



KEY TO SYMBOLS

Red symbols indicate internal characteristics.
Green symbols indicate external characteristics.



Sample Image Used

COLOR

D - F	G - J	K - M	N - R	S - Z	FANCY
Colorless	Near Colorless	Slightly Tinted	Very Light Color	Light Color	

CLARITY

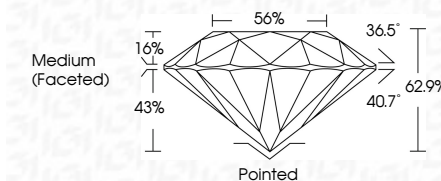
IF	VVS ¹⁻²	VS ¹⁻²	SI ¹⁻²	I ¹⁻³
Internally Flawless	Very Very Slightly Included	Very Slightly Included	Slightly Included	Included



May 22, 2024	
IGI Report Number	629459519
Description	NATURAL DIAMOND
Shape and Cutting Style	ROUND BRILLIANT
Measurements	7.30 - 7.35 X 4.61 MM

GRADING RESULTS

Carat Weight	1.53 CARAT
Color Grade	H
Clarity Grade	VVS 2
Cut Grade	EXCELLENT



ADDITIONAL GRADING INFORMATION

Polish	EXCELLENT
Symmetry	EXCELLENT
Fluorescence	VERY SLIGHT
Inscription(s)	156 629459519



© IGI 2020, International Gemological Institute

FD - 10 20

www.igi.org



May 24, 2024	Carat Weight	1.53 CARAT
GI Report No. 62945519	Color Grade	H
ROUND BRILLIANT	Clarity Grade	VS 2
30 - 7.35 x 4.61 MM	Cut Grade	EXCELLENT
	Depth	69.7%
	Table	56%
	Girdle	Medium (Faceted)
	Culet	Pointed
	Polish	EXCELLENT
	Symmetry	EXCELLENT
	Fluorescence	VERY SLIGHT