



ELECTRONIC COPY

DIAMOND REPORT

May 8, 2024	
IGI Report Number	632408229
Description	NATURAL DIAMOND
Shape and Cutting Style	CUT CORNERED RECTANGULAR MODIFIED BRILLIANT
Measurements	6.80 X 5.01 X 3.45 MM

GRADING RESULTS

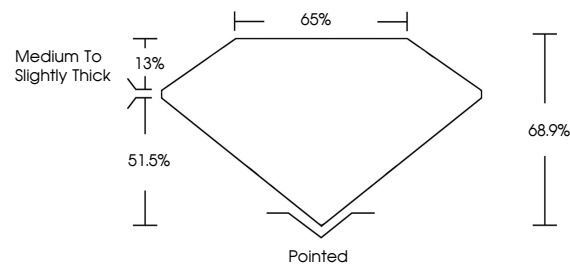
Carat Weight	1.03 CARAT
Color Grade	J
Clarity Grade	INTERNALLY FLAWLESS
Cut Grade	VERY GOOD

ADDITIONAL GRADING INFORMATION

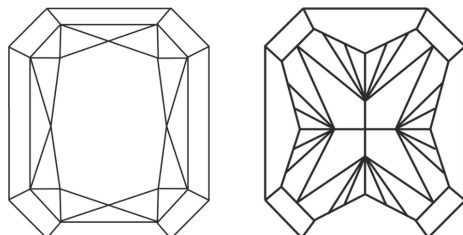
Polish	EXCELLENT
Symmetry	EXCELLENT
Fluorescence	VERY SLIGHT
Inscription(s)	151 632408229

632408229
Report verification at igi.org

PROPORTIONS

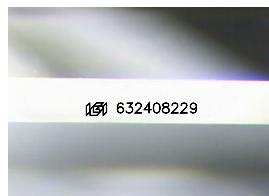


CLARITY CHARACTERISTICS



KEY TO SYMBOLS

Red symbols indicate internal characteristics.
Green symbols indicate external characteristics.



Sample Image Used

COLOR

D - F	G - J	K - M	N - R	S - Z	FANCY
Colorless	Near Colorless	Slightly Tinted	Very Light Color	Light Color	

CLARITY

IF	VS ¹⁻²	VS ¹⁻²	SI ¹⁻²	I ¹⁻³
Internally Flawless	Very Very Slightly Included	Very Slightly Included	Slightly Included	Included



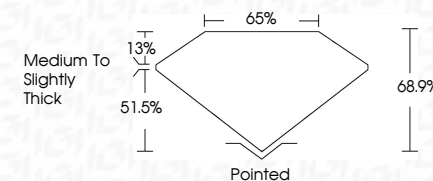
© IGI 2020, International Gemological Institute

FD - 10 20

DIAMOND REPORT



May 8, 2024	
IGI Report Number	632408229
Description	NATURAL DIAMOND
Shape and Cutting Style	CUT CORNERED RECTANGULAR MODIFIED BRILLIANT
Measurements	6.80 X 5.01 X 3.45 MM
GRADING RESULTS	
Carat Weight	1.03 CARAT
Color Grade	J
Clarity Grade	INTERNALLY FLAWLESS
Cut Grade	VERY GOOD



ADDITIONAL GRADING INFORMATION

Polish	EXCELLENT
Symmetry	EXCELLENT
Fluorescence	VERY SLIGHT
Inscription(s)	1531 632408229



IG

May 8, 2024	Carat Weight	1.03 CARAT
GI Report No 632408229	Color Grade	J
CUT CORNERED RECT. MODIFIED BRILLIANT	Clarity Grade	IF
5.80 X 5.01 X 3.45 MM	Cut Grade	VERY GOOD
	Depth	64.9%
	Table	60%
	Girdle	Medium to Slightly Thick
	Culet	Pointed
	Polish	EXCELLENT
	Symmetry	EXCELLENT
	Fluorescence	VERY SLIGHT