



# INTERNATIONAL GEMOLOGICAL INSTITUTE

## DIAMOND REPORT

August 13, 2024  
IGI Report Number **633413785**  
Description **NATURAL DIAMOND**  
Shape and Cutting Style **ROUND BRILLIANT**  
Measurements **5.97 - 6.02 X 3.64 MM**

## GRADING RESULTS

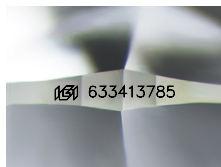
Carat Weight **0.80 CARAT**  
Color Grade **I**  
Clarity Grade **SI 2**  
Cut Grade **EXCELLENT**

## ADDITIONAL GRADING INFORMATION

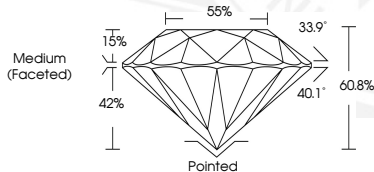
Polish **EXCELLENT**  
Symmetry **EXCELLENT**  
Fluorescence **NONE**  
Identification Features **FEATHER, CRYSTAL, CLOUD, NEEDLE**  
Inscription(s) **IGI 633413785**  
Comments: IDEAL CUT ROUND BRILLIANT

ELECTRONIC COPY

633413785



Sample Image Used



August 13, 2024  
IGI Report Number **633413785**  
ROUND BRILLIANT  
NATURAL DIAMOND  
5.97 - 6.02 X 3.64 MM  
Carat Weight **0.80 CARAT**  
Color Grade **I**  
Clarity Grade **SI 2**  
Cut Grade **EXCELLENT**  
Polish **EXCELLENT**  
Symmetry **EXCELLENT**  
Fluorescence **NONE**  
Inscription(s) **IGI 633413785**  
Comments: IDEAL CUT ROUND BRILLIANT



August 13, 2024  
IGI Report Number **633413785**  
ROUND BRILLIANT  
NATURAL DIAMOND  
5.97 - 6.02 X 3.64 MM  
Carat Weight **0.80 CARAT**  
Color Grade **I**  
Clarity Grade **SI 2**  
Cut Grade **EXCELLENT**  
Polish **EXCELLENT**  
Symmetry **EXCELLENT**  
Fluorescence **NONE**  
Inscription(s) **IGI 633413785**  
Comments: IDEAL CUT ROUND BRILLIANT



THIS DOCUMENT WAS PRODUCED WITH THE FOLLOWING SECURITY MEASURES: SPECIAL DOCUMENT PAPER, INK SCREENS, WATERMARK, BACKGROUND DESIGNS, HOLOGRAM AND OTHER SECURITY FEATURES NOT LISTED AND DO EXCEED DOCUMENT SECURITY INDUSTRY GUIDELINES.

For terms & conditions and to verify this report, please visit [www.igi.org](http://www.igi.org)