



# INTERNATIONAL GEMOLOGICAL INSTITUTE

ELECTRONIC COPY

633416599



August 12, 2024

IGI Report Number 633416599

ROUND BRILLIANT  
NATURAL DIAMOND

4.74 - 4.78 X 2.95 MM

Carat Weight 0.40 CARAT

Color Grade K

Clarity Grade VS 2

Cut Grade EXCELLENT

Polish EXCELLENT

Symmetry EXCELLENT

Fluorescence NONE

Inscription(s) IGI 633416599

Comments: IDEAL CUT ROUND

BRILLIANT

## DIAMOND REPORT

August 12, 2024

IGI Report Number

633416599

Description

NATURAL DIAMOND

Shape and Cutting Style

ROUND BRILLIANT

Measurements

4.74 - 4.78 X 2.95 MM

## GRADING RESULTS

Carat Weight

0.40 CARAT

Color Grade

K

Clarity Grade

VS 2

Cut Grade

EXCELLENT

## ADDITIONAL GRADING INFORMATION

Polish

EXCELLENT

Symmetry

EXCELLENT

Fluorescence

NONE

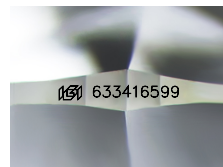
Identification Features

FEATHER

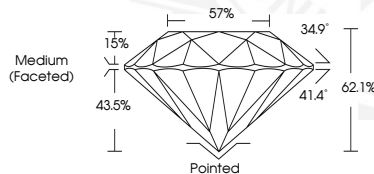
Inscription(s)

IGI 633416599

Comments: IDEAL CUT ROUND BRILLIANT



Sample Image Used



August 12, 2024

IGI Report Number 633416599

ROUND BRILLIANT

NATURAL DIAMOND

4.74 - 4.78 X 2.95 MM

Carat Weight 0.40 CARAT

Color Grade K

Clarity Grade VS 2

Cut Grade EXCELLENT

Polish EXCELLENT

Symmetry EXCELLENT

Fluorescence NONE

Inscription(s) IGI 633416599

Comments: IDEAL CUT ROUND

BRILLIANT



THIS DOCUMENT WAS PRODUCED WITH THE FOLLOWING SECURITY MEASURES: SPECIAL DOCUMENT PAPER, INK SCREENS, WATERMARK, BACKGROUND DESIGNS, HOLOGRAM AND OTHER SECURITY FEATURES NOT LISTED AND DO EXCEED DOCUMENT SECURITY INDUSTRY GUIDELINES.

For terms & conditions and to verify this report, please visit [www.igi.org](http://www.igi.org)