



# INTERNATIONAL GEMOLOGICAL INSTITUTE

## DIAMOND REPORT

July 1, 2024  
IGI Report Number **633469945**  
Description **NATURAL DIAMOND**  
Shape and Cutting Style **ROUND BRILLIANT**  
Measurements **5.66 - 5.72 X 3.56 MM**

## GRADING RESULTS

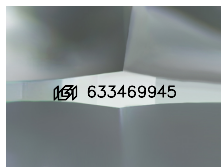
Carat Weight **0.70 CARAT**  
Color Grade **I**  
Clarity Grade **VVS 1**  
Cut Grade **EXCELLENT**

## ADDITIONAL GRADING INFORMATION

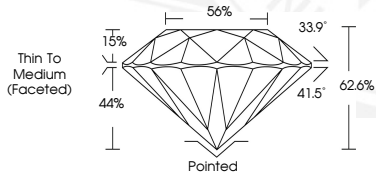
Polish **EXCELLENT**  
Symmetry **EXCELLENT**  
Fluorescence **VERY SLIGHT**  
Identification Features **FEATHER**  
Inscription(s) **IGI 633469945**

ELECTRONIC COPY

633469945



Sample Image Used



July 1, 2024  
IGI Report Number **633469945**  
ROUND BRILLIANT  
NATURAL DIAMOND  
5.66 - 5.72 X 3.56 MM  
Carat Weight **0.70 CARAT**  
Color Grade **I**  
Clarity Grade **VVS 1**  
Cut Grade **EXCELLENT**  
Polish **EXCELLENT**  
Symmetry **EXCELLENT**  
Fluorescence **VERY SLIGHT**  
Inscription(s) **IGI 633469945**



July 1, 2024  
IGI Report Number **633469945**  
ROUND BRILLIANT  
NATURAL DIAMOND  
5.66 - 5.72 X 3.56 MM  
Carat Weight **0.70 CARAT**  
Color Grade **I**  
Clarity Grade **VVS 1**  
Cut Grade **EXCELLENT**  
Polish **EXCELLENT**  
Symmetry **EXCELLENT**  
Fluorescence **VERY SLIGHT**  
Inscription(s) **IGI 633469945**



THIS DOCUMENT WAS PRODUCED WITH THE FOLLOWING SECURITY MEASURES: SPECIAL DOCUMENT PAPER, INK SCREENS, WATERMARK, BACKGROUND DESIGNS, HOLOGRAM AND OTHER SECURITY FEATURES NOT LISTED AND DO EXCEED DOCUMENT SECURITY INDUSTRY GUIDELINES.

For terms & conditions and to verify this report, please visit [www.igi.org](http://www.igi.org)