



# INTERNATIONAL GEMOLOGICAL INSTITUTE

ELECTRONIC COPY

633473549

## DIAMOND REPORT

October 16, 2024

IGI Report Number

633473549

Description

NATURAL DIAMOND

Shape and Cutting Style

ROUND BRILLIANT

Measurements

5.69 - 5.73 X 3.53 MM

## GRADING RESULTS

Carat Weight

0.70 CARAT

Color Grade

G

Clarity Grade

I1

Cut Grade

EXCELLENT

## ADDITIONAL GRADING INFORMATION

Polish

EXCELLENT

Symmetry

EXCELLENT

Fluorescence

SLIGHT

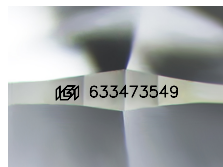
Identification Features

CRYSTAL, FEATHER

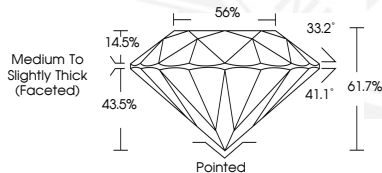
Inscription(s)

IGI 633473549

Comments: IDEAL CUT ROUND BRILLIANT



Sample Image Used



October 16, 2024

IGI Report Number 633473549

ROUND BRILLIANT

NATURAL DIAMOND

5.69 - 5.73 X 3.53 MM

Carat Weight 0.70 CARAT

Color Grade G

Clarity Grade I1

Cut Grade EXCELLENT

Polish EXCELLENT

Symmetry EXCELLENT

Fluorescence SLIGHT

Inscription(s) IGI 633473549

Comments: IDEAL CUT ROUND

BRILLIANT



October 16, 2024

IGI Report Number 633473549

ROUND BRILLIANT

NATURAL DIAMOND

5.69 - 5.73 X 3.53 MM

Carat Weight 0.70 CARAT

Color Grade G

Clarity Grade I1

Cut Grade EXCELLENT

Polish EXCELLENT

Symmetry EXCELLENT

Fluorescence SLIGHT

Inscription(s) IGI 633473549

Comments: IDEAL CUT ROUND

BRILLIANT



THIS DOCUMENT WAS PRODUCED WITH THE FOLLOWING SECURITY MEASURES: SPECIAL DOCUMENT PAPER, INK SCREENS, WATERMARK, BACKGROUND DESIGNS, HOLOGRAM AND OTHER SECURITY FEATURES NOT LISTED AND DO EXCEED DOCUMENT SECURITY INDUSTRY GUIDELINES.

For terms & conditions and to verify this report, please visit [www.igi.org](http://www.igi.org)