



ELECTRONIC COPY

DIAMOND REPORT

July 17, 2024	
IGI Report Number	634410549
Description	NATURAL DIAMOND
Shape and Cutting Style	ROUND BRILLIANT
Measurements	7.61 - 7.67 X 4.85 MM

GRADING RESULTS

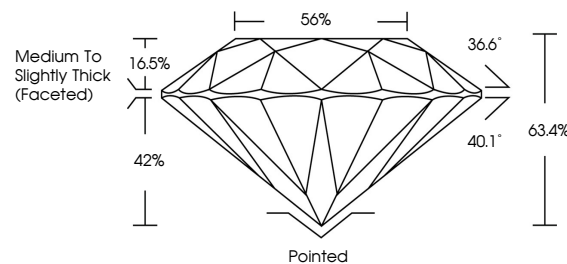
Carat Weight	1.80 CARAT
Color Grade	J
Clarity Grade	VS 2
Cut Grade	EXCELLENT

ADDITIONAL GRADING INFORMATION

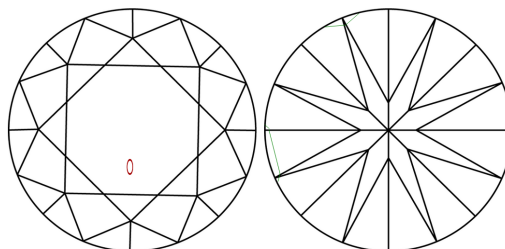
Polish	EXCELLENT
Symmetry	EXCELLENT
Fluorescence	NONE
Inscription(s)	131 634410549

634410549
Report verification at igi.org

PROPORTIONS

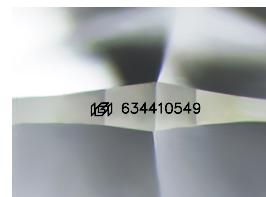


CLARITY CHARACTERISTICS



KEY TO SYMBOLS

Red symbols indicate internal characteristics.
Green symbols indicate external characteristics.



Sample Image Used

COLOR

D - F	G - J	K - M	N - R	S - Z	FANCY
Colorless	Near Colorless	Slightly Tinted	Very Light Color	Light Color	

CLARITY

IF	VVS ¹⁻²	VS ¹⁻²	SI ¹⁻²	I ¹⁻³
Internally Flawless	Very Very Slightly Included	Very Slightly Included	Slightly Included	Included



© IGI 2020, International Gemological Institute

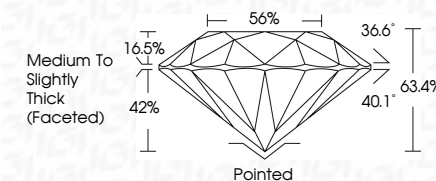
FD - 10 20



July 17, 2024	
IGI Report Number	634410549
Description	NATURAL DIAMOND
Shape and Cutting Style	ROUND BRILLIANT
Measurements	7.61 - 7.67 X 4.85 MM

GRADING RESULTS

Carat Weight	1.80 CARAT
Color Grade	J
Clarity Grade	VS 2
Cut Grade	EXCELLENT



ADDITIONAL GRADING INFORMATION

Polish	EXCELLENT
Symmetry	EXCELLENT
Fluorescence	NONE
Inscription(s)	1561 634410549



IG

July 17, 2024
IGI Report No 634410549
ROUND BRILLIANT

Carat Weight	1.80 CARAT
Color Grade	J
Clarity Grade	VS 2
Cut Grade	EXCELLENT
Depth	63.4%
Table	55%
Girdle	Medium to Slightly Thick (faceted)
Culet	Pointed
Polish	EXCELLENT
Symmetry	EXCELLENT
Fluorescence	NONE