



**ELECTRONIC COPY**

## DIAMOND REPORT

June 19, 2024	
IGI Report Number	635476847
Description	NATURAL DIAMOND
Shape and Cutting Style	CUT CORNERED RECTANGULAR MODIFIED BRILLIANT
Measurements	8.57 X 6.15 X 4.18 MM

## GRADING RESULTS

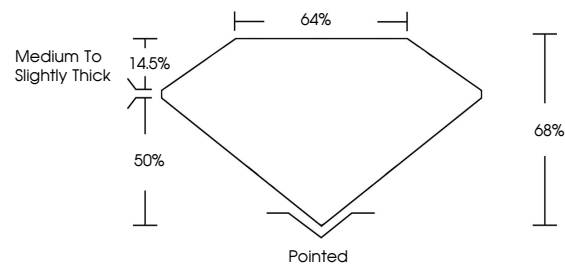
Carat Weight	2.03 CARATS
Color Grade	K
Clarity Grade	VS 1
Cut Grade	VERY GOOD

### ADDITIONAL GRADING INFORMATION

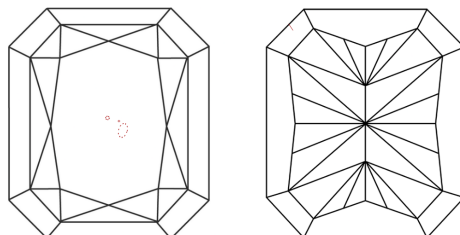
Polish	EXCELLENT
Symmetry	EXCELLENT
Fluorescence	SLIGHT
Inscription(s)	131 635476847

635476847  
Report verification at [igi.org](http://igi.org)

## PROPORTIONS

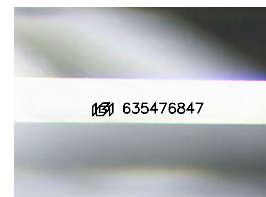


## CLARITY CHARACTERISTICS



## KEY TO SYMBOLS

Red symbols indicate internal characteristics.  
Green symbols indicate external characteristics.



Sample Image Used

**COLOR**

D - F	G - J	K - M	N - R	S - Z	FANCY
Colorless	Near Colorless	Slightly Tinted	Very Light Color	Light Color	

## CLARITY

IF	VVS <sup>1-2</sup>	VS <sup>1-2</sup>	SI <sup>1-2</sup>	I <sup>1-3</sup>
Internally Flawless	Very Very Slightly Included	Very Slightly Included	Slightly Included	Included



© IGI 2020, International Gemological Institute

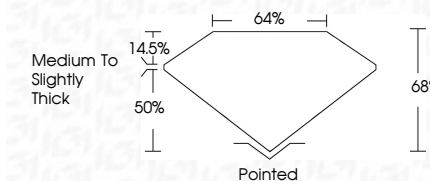
FD - 10 20

**www.igi.org**

## DIAMOND REPORT



June 19, 2024	
IGI Report Number	635476847
Description	NATURAL DIAMOND
Shape and Cutting Style	CUT CORNERED RECTANGULAR MODIFIED BRILLIANT
Measurements	8.57 X 6.15 X 4.18 MM
GRADING RESULTS	
Carat Weight	2.03 CARATS
Color Grade	K
Clarity Grade	VS 1
Cut Grade	VERY GOOD



### ADDITIONAL GRADING INFORMATION

Polish	EXCELLENT
Symmetry	EXCELLENT
Fluorescence	SLIGHT
Inscription(s)	(15) 635476847



June 19, 2024	GI Report No. 635476947	2.03 CARATS
CUT CORNERED RECT. MODIFIED BRILLIANT		
Color Weight	Wt 1.67 X 1.18 X 0.18 MM	
Color Grade		
Clarity Grade	Vs1	
Cut Grade	VERY GOOD	
Depth	68%	
Table	64%	
Girdle	Medium to Slightly Thick	
Fluorescence	None	
Symmetry	Excellent	
Polish	Excellent	
Notes	Quiet	



THIS DOCUMENT WAS PRODUCED WITH THE FOLLOWING SECURITY MEASURES: SPECIAL DOCUMENT PAPER, INK SCREENS, WATERMARK, BACKGROUND DESIGNS, HOLOGRAM AND OTHER SECURITY FEATURES NOT LISTED AND DO EXCEED DOCUMENT SECURITY INDUSTRY GUIDELINE