



# INTERNATIONAL GEMOLOGICAL INSTITUTE

## DIAMOND REPORT

August 19, 2024  
IGI Report Number **638421767**  
Description **NATURAL DIAMOND**  
Shape and Cutting Style **ROUND BRILLIANT**  
Measurements **4.35 - 4.38 X 2.72 MM**

## GRADING RESULTS

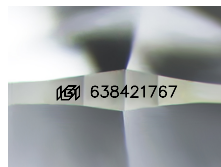
Carat Weight **0.31 CARAT**  
Color Grade **H**  
Clarity Grade **SI 1**  
Cut Grade **EXCELLENT**

## ADDITIONAL GRADING INFORMATION

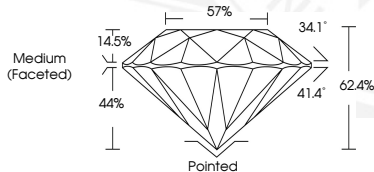
Polish **EXCELLENT**  
Symmetry **EXCELLENT**  
Fluorescence **VERY SLIGHT**  
Identification Features **CRYSTAL, FEATHER, CLOUD**  
Inscription(s) **(IGI) 638421767**  
Comments: IDEAL CUT ROUND BRILLIANT

ELECTRONIC COPY

638421767



Sample Image Used



August 19, 2024  
IGI Report Number **638421767**  
ROUND BRILLIANT  
NATURAL DIAMOND  
4.35 - 4.38 X 2.72 MM  
Carat Weight **0.31 CARAT**  
Color Grade **H**  
Clarity Grade **SI 1**  
Cut Grade **EXCELLENT**  
Polish **EXCELLENT**  
Symmetry **EXCELLENT**  
Fluorescence **VERY SLIGHT**  
Inscription(s) **(IGI) 638421767**  
Comments: IDEAL CUT ROUND  
BRILLIANT



August 19, 2024  
IGI Report Number **638421767**  
ROUND BRILLIANT  
NATURAL DIAMOND  
4.35 - 4.38 X 2.72 MM  
Carat Weight **0.31 CARAT**  
Color Grade **H**  
Clarity Grade **SI 1**  
Cut Grade **EXCELLENT**  
Polish **EXCELLENT**  
Symmetry **EXCELLENT**  
Fluorescence **VERY SLIGHT**  
Inscription(s) **(IGI) 638421767**  
Comments: IDEAL CUT ROUND  
BRILLIANT



THIS DOCUMENT WAS PRODUCED WITH THE FOLLOWING SECURITY MEASURES: SPECIAL DOCUMENT PAPER, INK SCREENS, WATERMARK, BACKGROUND DESIGNS, HOLOGRAM AND OTHER SECURITY FEATURES NOT LISTED AND DO EXCEED DOCUMENT SECURITY INDUSTRY GUIDELINES.

For terms & conditions and to verify this report, please visit [www.igi.org](http://www.igi.org)