



# INTERNATIONAL GEMOLOGICAL INSTITUTE

## DIAMOND REPORT

July 15, 2024  
IGI Report Number **639493961**  
Description **NATURAL DIAMOND**  
Shape and Cutting Style **ROUND BRILLIANT**  
Measurements **4.32 - 4.37 X 2.61 MM**

## GRADING RESULTS

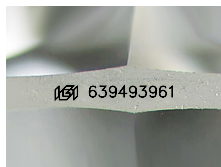
Carat Weight **0.30 CARAT**  
Color Grade **J**  
Clarity Grade **I 1**  
Cut Grade **EXCELLENT**

## ADDITIONAL GRADING INFORMATION

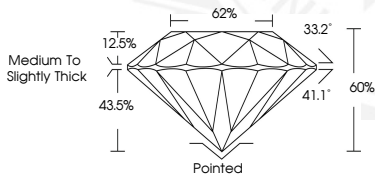
Polish **EXCELLENT**  
Symmetry **EXCELLENT**  
Fluorescence **SLIGHT**  
Identification Features **FEATHER, CRYSTAL CLOUD**  
Inscription(s) **IGI 639493961**

ELECTRONIC COPY

639493961



Sample Image Used



July 15, 2024  
IGI Report Number **639493961**  
**ROUND BRILLIANT**  
**NATURAL DIAMOND**  
**4.32 - 4.37 X 2.61 MM**  
Carat Weight **0.30 CARAT**  
Color Grade **J**  
Clarity Grade **I 1**  
Cut Grade **EXCELLENT**  
Polish **EXCELLENT**  
Symmetry **EXCELLENT**  
Fluorescence **SLIGHT**  
Inscription(s) **IGI 639493961**



July 15, 2024  
IGI Report Number **639493961**  
**ROUND BRILLIANT**  
**NATURAL DIAMOND**  
**4.32 - 4.37 X 2.61 MM**  
Carat Weight **0.30 CARAT**  
Color Grade **J**  
Clarity Grade **I 1**  
Cut Grade **EXCELLENT**  
Polish **EXCELLENT**  
Symmetry **EXCELLENT**  
Fluorescence **SLIGHT**  
Inscription(s) **IGI 639493961**



THIS DOCUMENT WAS PRODUCED WITH THE FOLLOWING SECURITY MEASURES: SPECIAL DOCUMENT PAPER, INK SCREENS, WATERMARK, BACKGROUND DESIGNS, HOLOGRAM AND OTHER SECURITY FEATURES NOT LISTED AND DO EXCEED DOCUMENT SECURITY INDUSTRY GUIDELINES.

For terms & conditions and to verify this report, please visit [www.igi.org](http://www.igi.org)