



**ELECTRONIC COPY**

## DIAMOND REPORT

October 9, 2024	
IGI Report Number	640465730
Description	NATURAL DIAMOND
Shape and Cutting Style	ROUND BRILLIANT
Measurements	9.36 - 9.40 X 5.76 MM

## GRADING RESULTS

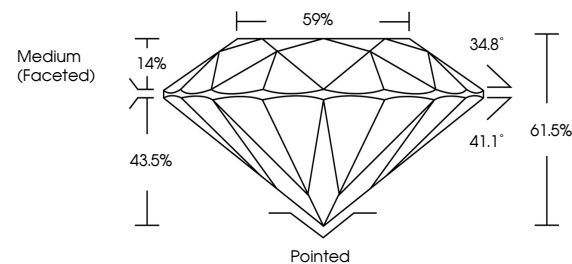
Carat Weight	3.15 CARATS
Color Grade	F
Clarity Grade	VS 2
Cut Grade	EXCELLENT

### ADDITIONAL GRADING INFORMATION

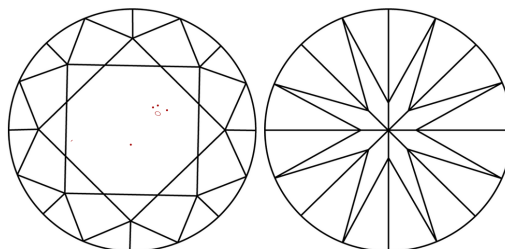
Polish	EXCELLENT
Symmetry	EXCELLENT
Fluorescence	SLIGHT
Inscription(s)	 640465730
Comments: IDEAL CUT ROUND BRILLIANT	

640465730  
Report verification at [igi.org](http://igi.org)

## PROPORTIONS

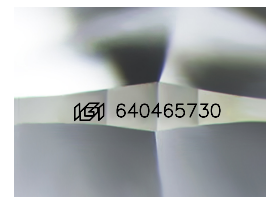


## CLARITY CHARACTERISTICS



### KEY TO SYMBOLS

Red symbols indicate internal characteristics.  
Green symbols indicate external characteristics.



Sample Image Used

## COLOR

D - F	G - J	K - M	N - R	S - Z	FANCY
Colorless	Near Colorless	Slightly Tinted	Very Light Color	Light Color	

## CLARITY

IF	VVS <sup>1-2</sup>	VS <sup>1-2</sup>	SI <sup>1-2</sup>	I <sup>1-3</sup>
Internally Flawless	Very Very Slightly Included	Very Slightly Included	Slightly Included	Included



© IGI 2020, International Gemological Institute

FD - 10 20

**www.igi.org**

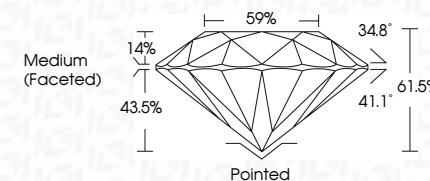
## DIAMOND REPORT



October 9, 2024	
IGI Report Number	640465730
Description	NATURAL DIAMOND
Shape and Cutting Style	ROUND BRILLIANT
Measurements	9.36 - 9.40 X 5.76 MM

## GRADING RESULTS

Carat Weight	3.15 CARATS
Color Grade	F
Clarity Grade	VS 2
Cut Grade	EXCELLENT



### ADDITIONAL GRADING INFORMATION

Polish	EXCELLENT
Symmetry	EXCELLENT
Fluorescence	SLIGHT
Inscription(s)	 640465730
Comments: IDEAL CUT ROUND BRILLIANT	



October 9, 2024  
GI Report No 640465730  
ROUND BRILLIANT

3.36 - 9.40 X 5.76 MM	3.15 CARATS	VVS 2	EXCELLENT	61.5%	59%	Martin (Excellent)
Carat Weight						
Color Grade						
Clarity Grade						
Cut Grade						
Depth						
Table						
Grade						

Culet	Pointed
Polish	EXCELLENT
Symmetry	EXCELLENT
Fluorescence	SLIGHT

**Comments:**  
DEAL CUT DOWN BRILLIANT