



**ELECTRONIC COPY**

## DIAMOND REPORT

September 28, 2024	
IGI Report Number	642405455
Description	NATURAL DIAMOND
Shape and Cutting Style	ROUND BRILLIANT
Measurements	6.96 - 7.00 X 4.31 MM

## GRADING RESULTS

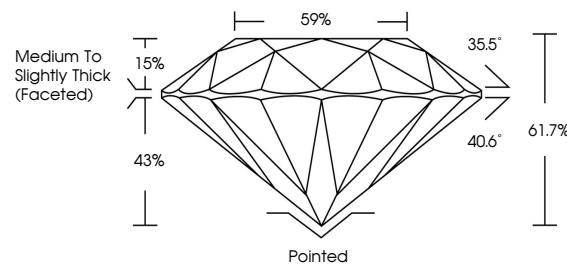
Carat Weight	1.32 CARAT
Color Grade	E
Clarity Grade	SI 2
Cut Grade	EXCELLENT

### ADDITIONAL GRADING INFORMATION

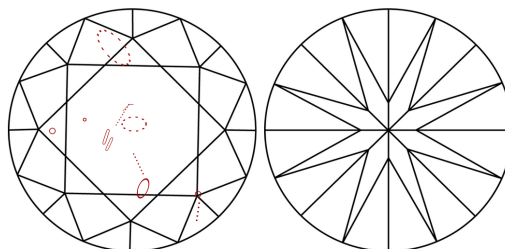
Polish	EXCELLENT
Symmetry	EXCELLENT
Fluorescence	NONE
Inscription(s)	 642405455
Comments: IDEAL CUT ROUND BRILLIANT	

642405455  
Report verification at [igi.org](http://igi.org)

## PROPORTIONS



## CLARITY CHARACTERISTICS



## KEY TO SYMBOLS

Red symbols indicate internal characteristics.  
Green symbols indicate external characteristics.



Sample Image Used

**COLOR**

D - F	G - J	K - M	N - R	S - Z	FANCY
Colorless	Near Colorless	Slightly Tinted	Very Light Color	Light Color	

## CLARITY

IF	VVS <sup>1-2</sup>	VS <sup>1-2</sup>	SI <sup>1-2</sup>	I <sup>1-3</sup>
Internally Flawless	Very Very Slightly Included	Very Slightly Included	Slightly Included	Included



© IGI 2020, International Gemological Institute

FD - 10 20

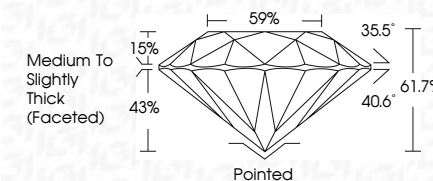
DIAMOND REPORT



September 28, 2024	
IGI Report Number	642405455
Description	NATURAL DIAMOND
Shape and Cutting Style	ROUND BRILLIANT
Measurements	6.96 - 7.00 X 4.31 MM

## GRADING RESULTS

Carat Weight	1.32 CARAT
Color Grade	E
Clarity Grade	SI 2
Cut Grade	EXCELLENT



### ADDITIONAL GRADING INFORMATION

Polish	EXCELLENT
Symmetry	EXCELLENT
Fluorescence	NONE
Inscription(s)	(GSI) 642405455
Comments: IDEAL CUT ROUND BRILLIANT	



September 28, 2024  
IGI Report No 642405455  
ROUND BRILLIANT

ROUND BRILLIANT  
5.96 - 7.00 X 4.31 MM

5.96 - 7.00 X 4.31 MM	1.32 CARAT	F
Carat Weight		
Color Grade		

Color Grade	E
-------------	---

Clarity Grade	SI 2
Cut Grade	EXCELLENT
Depth	61.7%

Depth	61.7%
Table	59%

able	59%
Girdle	Medium To Slightly

	Culet	Pointed
1		
2		
3		
4		
5		
6		
7		
8		
9		
10		
11		
12		
13		
14		
15		
16		
17		
18		
19		
20		
21		
22		
23		
24		
25		
26		
27		
28		
29		
30		
31		
32		
33		
34		
35		
36		
37		
38		
39		
40		
41		
42		
43		
44		
45		
46		
47		
48		
49		
50		
51		
52		
53		
54		
55		
56		
57		
58		
59		
60		
61		
62		
63		
64		
65		
66		
67		
68		
69		
70		
71		
72		
73		
74		
75		
76		
77		
78		
79		
80		
81		
82		
83		
84		
85		
86		
87		
88		
89		
90		
91		
92		
93		
94		
95		
96		
97		
98		
99		
100		

Current	Polished
Polish	EXCELLENT

Symmetry

Fluorescence	NONE
Excitation (nm)	450-490/405/485

**Comments:**  
**IDEAL CUT ROUND BRILLIANT**