



ELECTRONIC COPY

DIAMOND REPORT

October 18, 2024	
IGI Report Number	642405622
Description	NATURAL DIAMOND
Shape and Cutting Style	ROUND BRILLIANT
Measurements	6.33 - 6.39 X 3.98 MM

GRADING RESULTS

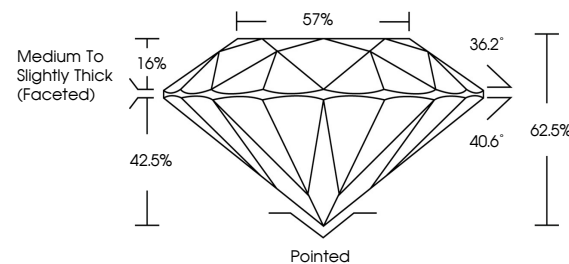
Carat Weight	1.01 CARAT
Color Grade	D
Clarity Grade	SI 2
Cut Grade	EXCELLENT

ADDITIONAL GRADING INFORMATION

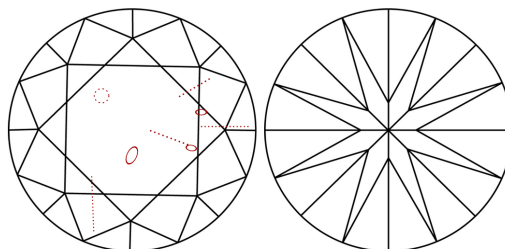
Polish	EXCELLENT
Symmetry	EXCELLENT
Fluorescence	NONE
Inscription(s)	 642405622
Comments: IDEAL CUT ROUND BRILLIANT	

642405622
Report verification at lgi.org

PROPORTIONS

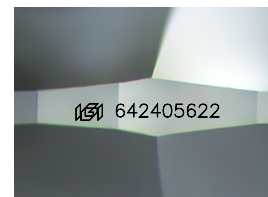


CLARITY CHARACTERISTICS



KEY TO SYMBOLS

Red symbols indicate internal characteristics.
Green symbols indicate external characteristics.



Sample Image Used

COLOR

D - F	G - J	K - M	N - R	S - Z	FANCY
Colorless	Near Colorless	Slightly Tinted	Very Light Color	Light Color	

CLARITY

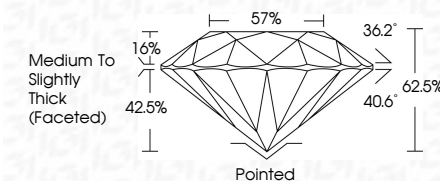
IF	VS ¹⁻²	VS ¹⁻²	SI ¹⁻²	I ¹⁻³
Internally Flawless	Very Very Slightly Included	Very Slightly Included	Slightly Included	Included



October 18, 2024	
IGI Report Number	642405622
Description	NATURAL DIAMOND
Shape and Cutting Style	ROUND BRILLIANT
Measurements	6.33 - 6.39 X 3.98 MM

GRADING RESULTS

Carat Weight	1.01 CARAT
Color Grade	D
Clarity Grade	SI 2
Cut Grade	EXCELLENT



ADDITIONAL GRADING INFORMATION

Polish	EXCELLENT
Symmetry	EXCELLENT
Fluorescence	NONE
Inscription(s)	(GSI) 642405622
Comments: IDEAL CUT ROUND BRILLIANT	



© IGI 2020, International Gemological Institute

FD - 10 20

www.igi.org



THIS DOCUMENT WAS PRODUCED WITH THE FOLLOWING SECURITY MEASURES: SPECIAL DOCUMENT PAPER, INK SCREENS, WATERMARK, BACKGROUND DESIGNS, HOLOGRAM AND OTHER SECURITY FEATURES NOT LISTED AND DO EXCEED DOCUMENT SECURITY INDUSTRY GUIDELINES

October 18, 2024
IGI Report No 642405622
BEYOND BRILLIANT

Color Weight	Carat	1.01 CARAT
Color Grade	D	D
Clarity Grade	S12	S12
Cut Grade	EXCELLENT	EXCELLENT
Depth	62.6%	62.6%
Table	57%	57%
Grade	Medium To slightly Thick (facet=0)	Medium To slightly Thick (facet=0)
Culet	Pointed	Pointed
Polish	EXCELLENT	EXCELLENT
Symmetry	EXCELLENT	EXCELLENT
Fluorescence	NONE	NONE
Fluorescence2	None 400-900nm	None 400-900nm

Comments: