



# INTERNATIONAL GEMOLOGICAL INSTITUTE

## DIAMOND REPORT

December 4, 2024

IGI Report Number

645429231

Description

NATURAL DIAMOND

Shape and Cutting Style

ROUND BRILLIANT

Measurements

4.26 - 4.31 X 2.67 MM

## GRADING RESULTS

Carat Weight

0.30 CARAT

Color Grade

F

Clarity Grade

SI 1

Cut Grade

EXCELLENT

## ADDITIONAL GRADING INFORMATION

Polish

EXCELLENT

Symmetry

EXCELLENT

Fluorescence

VERY SLIGHT

Identification Features

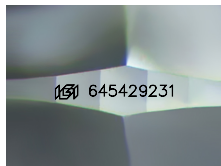
CRYSTAL CLOUD, FEATHER

Inscription(s)

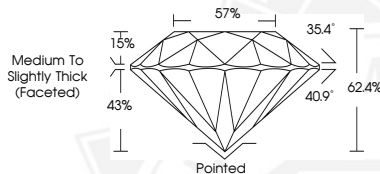
IGI 645429231

Comments: IDEAL CUT ROUND BRILLIANT

ELECTRONIC COPY



Sample Image Used



December 4, 2024

IGI Report Number 645429231

ROUND BRILLIANT

NATURAL DIAMOND

4.26 - 4.31 X 2.67 MM

Carat Weight 0.30 CARAT

Color Grade F

Clarity Grade SI 1

Cut Grade EXCELLENT

Polish EXCELLENT

Symmetry EXCELLENT

Fluorescence VERY SLIGHT

Inscription(s) IGI 645429231

Comments: IDEAL CUT ROUND

BRILLIANT



December 4, 2024

IGI Report Number 645429231

ROUND BRILLIANT

NATURAL DIAMOND

4.26 - 4.31 X 2.67 MM

Carat Weight 0.30 CARAT

Color Grade F

Clarity Grade SI 1

Cut Grade EXCELLENT

Polish EXCELLENT

Symmetry EXCELLENT

Fluorescence VERY SLIGHT

Inscription(s) IGI 645429231

Comments: IDEAL CUT ROUND

BRILLIANT



THIS DOCUMENT WAS PRODUCED WITH THE FOLLOWING SECURITY MEASURES: SPECIAL DOCUMENT PAPER, INK SCREENS, WATERMARK, BACKGROUND DESIGN, HOLOGRAM AND OTHER SECURITY FEATURES NOT LISTED AND DO EXCEED DOCUMENT SECURITY INDUSTRY GUIDELINES.

For terms & conditions and to verify this report, please visit [www.igi.org](http://www.igi.org)