



# INTERNATIONAL GEMOLOGICAL INSTITUTE

ELECTRONIC COPY

645474874

## DIAMOND REPORT

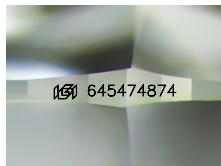
August 9, 2024  
IGI Report Number **645474874**  
Description **NATURAL DIAMOND**  
Shape and Cutting Style **ROUND BRILLIANT**  
Measurements **5.09 - 5.12 X 3.20 MM**

## GRADING RESULTS

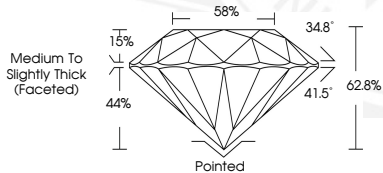
Carat Weight **0.51 CARAT**  
Color Grade **H**  
Clarity Grade **SI 2**  
Cut Grade **EXCELLENT**

## ADDITIONAL GRADING INFORMATION

Polish **EXCELLENT**  
Symmetry **EXCELLENT**  
Fluorescence **NONE**  
Identification Features **FEATHER**  
Inscription(s) **(IGI) 645474874**



Sample Image Used



August 9, 2024  
IGI Report Number **645474874**  
ROUND BRILLIANT  
NATURAL DIAMOND  
5.09 - 5.12 X 3.20 MM  
Carat Weight **0.51 CARAT**  
Color Grade **H**  
Clarity Grade **SI 2**  
Cut Grade **EXCELLENT**  
Polish **EXCELLENT**  
Symmetry **EXCELLENT**  
Fluorescence **NONE**  
Inscription(s) **(IGI) 645474874**



August 9, 2024  
IGI Report Number **645474874**  
ROUND BRILLIANT  
NATURAL DIAMOND  
5.09 - 5.12 X 3.20 MM  
Carat Weight **0.51 CARAT**  
Color Grade **H**  
Clarity Grade **SI 2**  
Cut Grade **EXCELLENT**  
Polish **EXCELLENT**  
Symmetry **EXCELLENT**  
Fluorescence **NONE**  
Inscription(s) **(IGI) 645474874**



THIS DOCUMENT WAS PRODUCED WITH THE FOLLOWING SECURITY MEASURES: SPECIAL DOCUMENT PAPER, INK SCREENS, WATERMARK, BACKGROUND DESIGNS, HOLOGRAM AND OTHER SECURITY FEATURES NOT LISTED AND DO EXCEED DOCUMENT SECURITY INDUSTRY GUIDELINES.

For terms & conditions and to verify this report, please visit [www.igi.org](http://www.igi.org)