



# INTERNATIONAL GEMOLOGICAL INSTITUTE

ELECTRONIC COPY

646463361



August 8, 2024  
IGI Report Number 646463361  
ROUND BRILLIANT  
NATURAL DIAMOND  
3.71 - 3.74 X 2.29 MM  
Carat Weight 0.19 CARAT  
Color Grade D  
Clarity Grade VS 2  
Cut Grade EXCELLENT  
Polish EXCELLENT  
Symmetry EXCELLENT  
Fluorescence NONE  
Inscription(s) IGI 646463361  
Comments: IDEAL CUT ROUND  
BRILLIANT

## DIAMOND REPORT

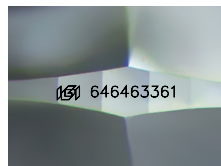
August 8, 2024  
IGI Report Number 646463361  
Description NATURAL DIAMOND  
Shape and Cutting Style ROUND BRILLIANT  
Measurements 3.71 - 3.74 X 2.29 MM

## GRADING RESULTS

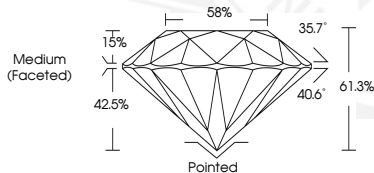
Carat Weight 0.19 CARAT  
Color Grade D  
Clarity Grade VS 2  
Cut Grade EXCELLENT

## ADDITIONAL GRADING INFORMATION

Polish EXCELLENT  
Symmetry EXCELLENT  
Fluorescence NONE  
Identification Features CRYSTAL  
Inscription(s) IGI 646463361  
Comments: IDEAL CUT ROUND BRILLIANT



Sample Image Used



August 8, 2024  
IGI Report Number 646463361  
ROUND BRILLIANT  
NATURAL DIAMOND  
3.71 - 3.74 X 2.29 MM  
Carat Weight 0.19 CARAT  
Color Grade D  
Clarity Grade VS 2  
Cut Grade EXCELLENT  
Polish EXCELLENT  
Symmetry EXCELLENT  
Fluorescence NONE  
Inscription(s) IGI 646463361  
Comments: IDEAL CUT ROUND  
BRILLIANT



THIS DOCUMENT WAS PRODUCED WITH THE FOLLOWING SECURITY MEASURES: SPECIAL DOCUMENT PAPER, INK SCREENS, WATERMARK, BACKGROUND DESIGNS, HOLOGRAM AND OTHER SECURITY FEATURES NOT LISTED AND DO EXCEED DOCUMENT SECURITY INDUSTRY GUIDELINES.

For terms & conditions and to verify this report, please visit [www.igi.org](http://www.igi.org)