



**ELECTRONIC COPY**

## DIAMOND REPORT

October 17, 2024	
IGI Report Number	647437357
Description	NATURAL DIAMOND
Shape and Cutting Style	CUT CORNERED RECTANGULAR MODIFIED BRILLIANT
Measurements	6.36 X 5.37 X 3.74 MM

## GRADING RESULTS

Carat Weight	1.13 CARAT
Color Grade	K
Clarity Grade	SI 2
Cut Grade	VERY GOOD

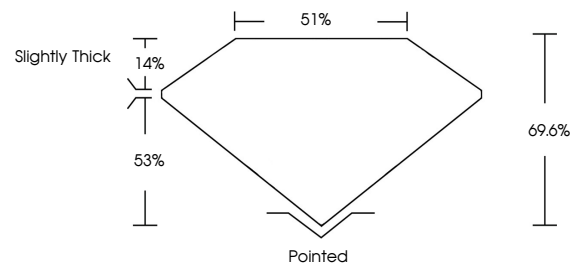
### ADDITIONAL GRADING INFORMATION

Polish	EXCELLENT
Symmetry	EXCELLENT
Fluorescence	NONE
Inscription(s)	 647437357

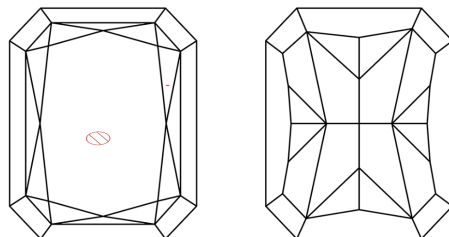
Comments: Pre-existing laser inscription on girdle  
GIA 6495044083

647437357  
Report verification at [igi.org](http://igi.org)

## PROPORTIONS

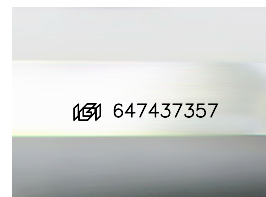


## CLARITY CHARACTERISTICS



## KEY TO SYMBOLS

Red symbols indicate internal characteristics.  
Green symbols indicate external characteristics.



Sample Image Used

**COLOR**

D - F	G - J	K - M	N - R	S - Z	FANCY
Colorless	Near Colorless	Slightly Tinted	Very Light Color	Light Color	

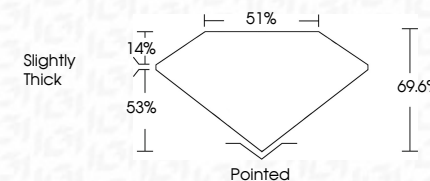
## CLARITY

IF	VVS <sup>1-2</sup>	VS <sup>1-2</sup>	SI <sup>1-2</sup>	I <sup>1-3</sup>
Internally Flawless	Very Very Slightly Included	Very Slightly Included	Slightly Included	Included

## DIAMOND REPORT



October 17, 2024	
IGI Report Number	647437357
Description	NATURAL DIAMOND
Shape and Cutting Style	CUT CORNERED RECTANGULAR MODIFIED BRILLIANT
Measurements	6.36 X 5.37 X 3.74 MM
<b>GRADING RESULTS</b>	
Carat Weight	1.13 CARAT
Color Grade	K
Clarity Grade	SI 2
Cut Grade	VERY GOOD



### ADDITIONAL GRADING INFORMATION

Polish	EXCELLENT
Symmetry	EXCELLENT
Fluorescence	NONE
Inscription(s)	<del>163</del> 647437357
Comments: Pre-existing laser inscription on girdle GIA 6495044083	



© IGI 2020, International Gemological Institute

FD - 10 20

**www.igi.org**



THIS DOCUMENT WAS PRODUCED WITH THE FOLLOWING SECURITY MEASURES: SPECIAL DOCUMENT PAPER, INK SCREENS, WATERMARK, BACKGROUND DESIGNS, HOLOGRAM AND OTHER SECURITY FEATURES NOT LISTED AND DO EXCEED DOCUMENT SECURITY INDUSTRY GUIDELINE

October 17, 2024	GI Report No 64743757	GC# CORNED REC1, MODIFIED BRILLIANT
Color	1.13 C49AT	
Carat Weight	3.66 X 3.66 X 3.37 X 3.74 MM	
Color Grade	K	
Clarity Grade	S I 2	
Cut Grade	VERY GOOD	
Depth	66.0%	
Table	61%	
Girdle	Slightly Thick	
Culet	Pointed	
Polish	EXCELLENT	
Symmetry	EXCELLENT	
Fluorescence	NONE	
Inscriptions(s)	169 647437537	
Comments:	Please see inscription on girdle 534 647437537	