



# INTERNATIONAL GEMOLOGICAL INSTITUTE

ELECTRONIC COPY

648404461

## DIAMOND REPORT

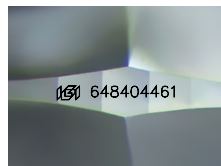
October 15, 2024  
IGI Report Number **648404461**  
Description **NATURAL DIAMOND**  
Shape and Cutting Style **ROUND BRILLIANT**  
Measurements **5.67 - 5.70 X 3.57 MM**

## GRADING RESULTS

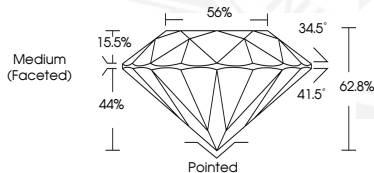
Carat Weight **0.70 CARAT**  
Color Grade **J**  
Clarity Grade **VVS 1**  
Cut Grade **EXCELLENT**

## ADDITIONAL GRADING INFORMATION

Polish **EXCELLENT**  
Symmetry **EXCELLENT**  
Fluorescence **NONE**  
Identification Features **FEATHER**  
Inscription(s) **(IGI) 648404461**



Sample Image Used



October 15, 2024  
IGI Report Number **648404461**  
ROUND BRILLIANT  
NATURAL DIAMOND  
5.67 - 5.70 X 3.57 MM  
Carat Weight **0.70 CARAT**  
Color Grade **J**  
Clarity Grade **VVS 1**  
Cut Grade **EXCELLENT**  
Polish **EXCELLENT**  
Symmetry **EXCELLENT**  
Fluorescence **NONE**  
Inscription(s) **(IGI) 648404461**



October 15, 2024  
IGI Report Number **648404461**  
ROUND BRILLIANT  
NATURAL DIAMOND  
5.67 - 5.70 X 3.57 MM  
Carat Weight **0.70 CARAT**  
Color Grade **J**  
Clarity Grade **VVS 1**  
Cut Grade **EXCELLENT**  
Polish **EXCELLENT**  
Symmetry **EXCELLENT**  
Fluorescence **NONE**  
Inscription(s) **(IGI) 648404461**



THIS DOCUMENT WAS PRODUCED WITH THE FOLLOWING SECURITY MEASURES: SPECIAL DOCUMENT PAPER, INK SCREENS, WATERMARK, BACKGROUND DESIGNS, HOLOGRAM AND OTHER SECURITY FEATURES NOT LISTED AND DO EXCEED DOCUMENT SECURITY INDUSTRY GUIDELINES.

For terms & conditions and to verify this report, please visit [www.igi.org](http://www.igi.org)