



# INTERNATIONAL GEMOLOGICAL INSTITUTE

## DIAMOND REPORT

October 14, 2024  
IGI Report Number **649449705**  
Description **NATURAL DIAMOND**  
Shape and Cutting Style **CUT CORNERED RECTANGULAR MODIFIED  
BRILLIANT**  
Measurements **5.29 X 4.10 X 2.62 MM**

## GRADING RESULTS

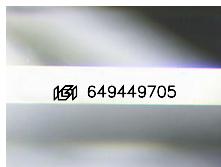
Carat Weight **0.50 CARAT**  
Color Grade **I**  
Clarity Grade **VS 1**  
Cut Grade **EXCELLENT**

## ADDITIONAL GRADING INFORMATION

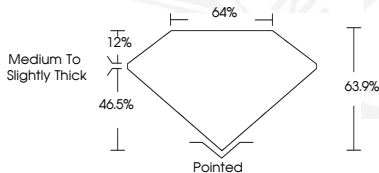
Polish **EXCELLENT**  
Symmetry **EXCELLENT**  
Fluorescence **NONE**  
Identification Features **FEATHER**  
Inscription(s) **IGI 649449705**

ELECTRONIC COPY

649449705



Sample Image Used



October 14, 2024  
IGI Report Number **649449705**  
CUT CORNERED RECTANGULAR  
MODIFIED BRILLIANT  
NATURAL DIAMOND  
5.29 X 4.10 X 2.62 MM  
Carat Weight **0.50 CARAT**  
Color Grade **I**  
Clarity Grade **VS 1**  
Cut Grade **EXCELLENT**  
Polish **EXCELLENT**  
Symmetry **EXCELLENT**  
Fluorescence **NONE**  
Inscription(s) **IGI 649449705**



October 14, 2024  
IGI Report Number **649449705**  
CUT CORNERED RECTANGULAR  
MODIFIED BRILLIANT  
NATURAL DIAMOND  
5.29 X 4.10 X 2.62 MM  
Carat Weight **0.50 CARAT**  
Color Grade **I**  
Clarity Grade **VS 1**  
Cut Grade **EXCELLENT**  
Polish **EXCELLENT**  
Symmetry **EXCELLENT**  
Fluorescence **NONE**  
Inscription(s) **IGI 649449705**



THIS DOCUMENT WAS PRODUCED WITH THE FOLLOWING SECURITY MEASURES: SPECIAL DOCUMENT PAPER, INK SCREENS, WATERMARK, BACKGROUND DESIGNS, HOLOGRAM AND OTHER SECURITY FEATURES NOT LISTED AND DO EXCEED DOCUMENT SECURITY INDUSTRY GUIDELINES.

For terms & conditions and to verify this report, please visit [www.igi.org](http://www.igi.org)