



# INTERNATIONAL GEMOLOGICAL INSTITUTE

## DIAMOND REPORT

October 13, 2024  
IGI Report Number **649450564**  
Description **NATURAL DIAMOND**  
Shape and Cutting Style **ROUND BRILLIANT**  
Measurements **4.77 - 4.81 X 2.88 MM**

## GRADING RESULTS

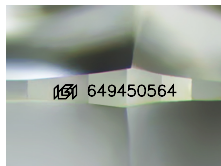
Carat Weight **0.40 CARAT**  
Color Grade **H**  
Clarity Grade **SI 2**  
Cut Grade **EXCELLENT**

## ADDITIONAL GRADING INFORMATION

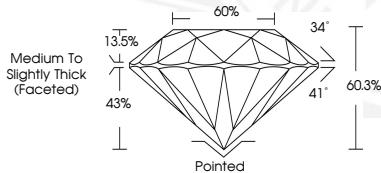
Polish **EXCELLENT**  
Symmetry **EXCELLENT**  
Fluorescence **NONE**  
Identification Features **FEATHER**  
Inscription(s) **(IGI) 649450564**  
Comments: IDEAL CUT ROUND BRILLIANT

ELECTRONIC COPY

649450564



Sample Image Used



October 13, 2024  
IGI Report Number **649450564**  
ROUND BRILLIANT  
NATURAL DIAMOND  
4.77 - 4.81 X 2.88 MM  
Carat Weight **0.40 CARAT**  
Color Grade **H**  
Clarity Grade **SI 2**  
Cut Grade **EXCELLENT**  
Polish **EXCELLENT**  
Symmetry **EXCELLENT**  
Fluorescence **NONE**  
Inscription(s) **(IGI) 649450564**  
Comments: IDEAL CUT ROUND BRILLIANT



October 13, 2024  
IGI Report Number **649450564**  
ROUND BRILLIANT  
NATURAL DIAMOND  
4.77 - 4.81 X 2.88 MM  
Carat Weight **0.40 CARAT**  
Color Grade **H**  
Clarity Grade **SI 2**  
Cut Grade **EXCELLENT**  
Polish **EXCELLENT**  
Symmetry **EXCELLENT**  
Fluorescence **NONE**  
Inscription(s) **(IGI) 649450564**  
Comments: IDEAL CUT ROUND BRILLIANT



THIS DOCUMENT WAS PRODUCED WITH THE FOLLOWING SECURITY MEASURES: SPECIAL DOCUMENT PAPER, INK SCREENS, WATERMARK, BACKGROUND DESIGNS, HOLOGRAM AND OTHER SECURITY FEATURES NOT LISTED AND DO EXCEED DOCUMENT SECURITY INDUSTRY GUIDELINES.

For terms & conditions and to verify this report, please visit [www.igi.org](http://www.igi.org)